

Figure 1: Map of the eastern part of the Aurion-B2Gold JV area.

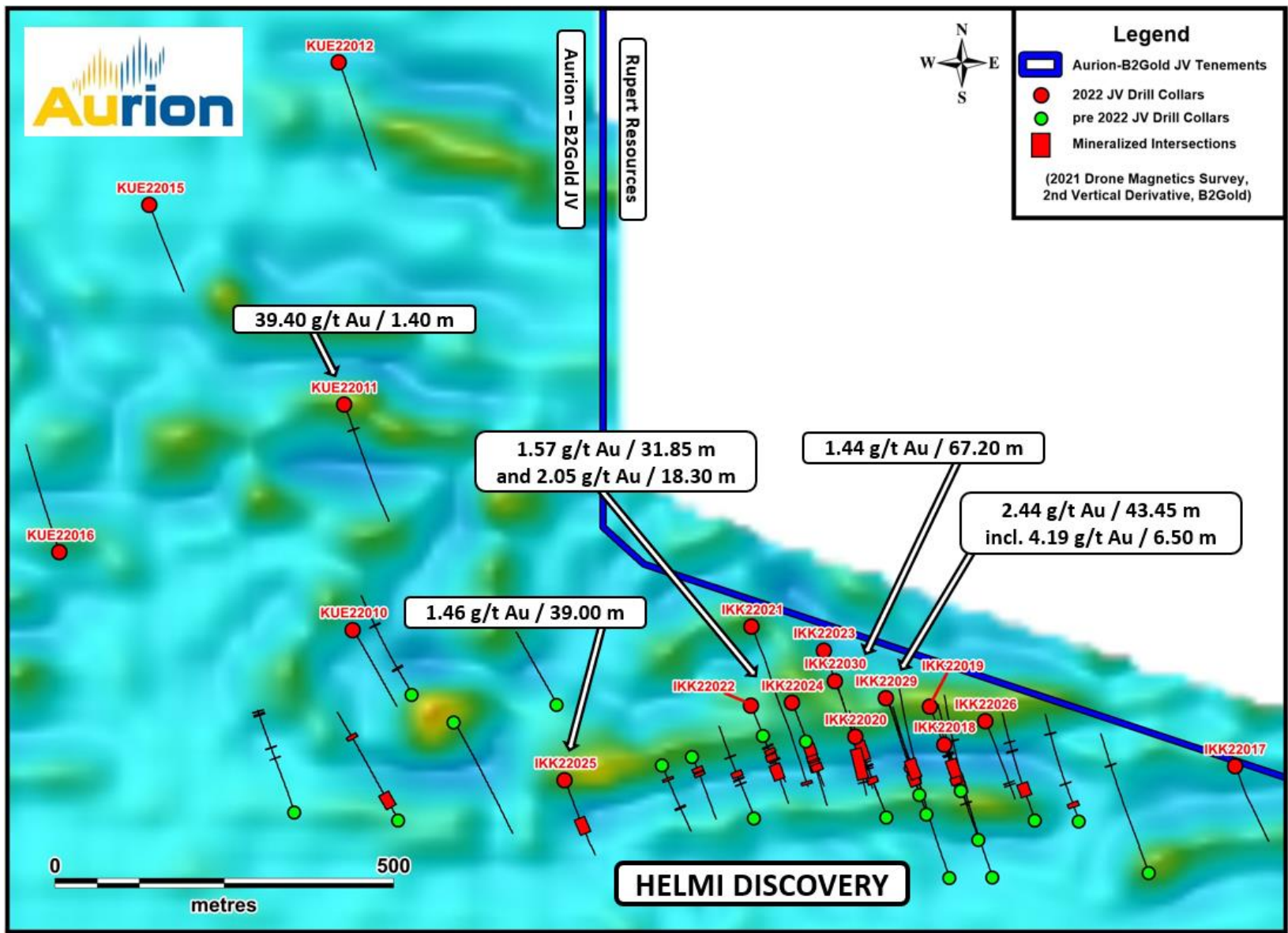


Figure 2: Drill hole locations. Aeromagnetic map as background.

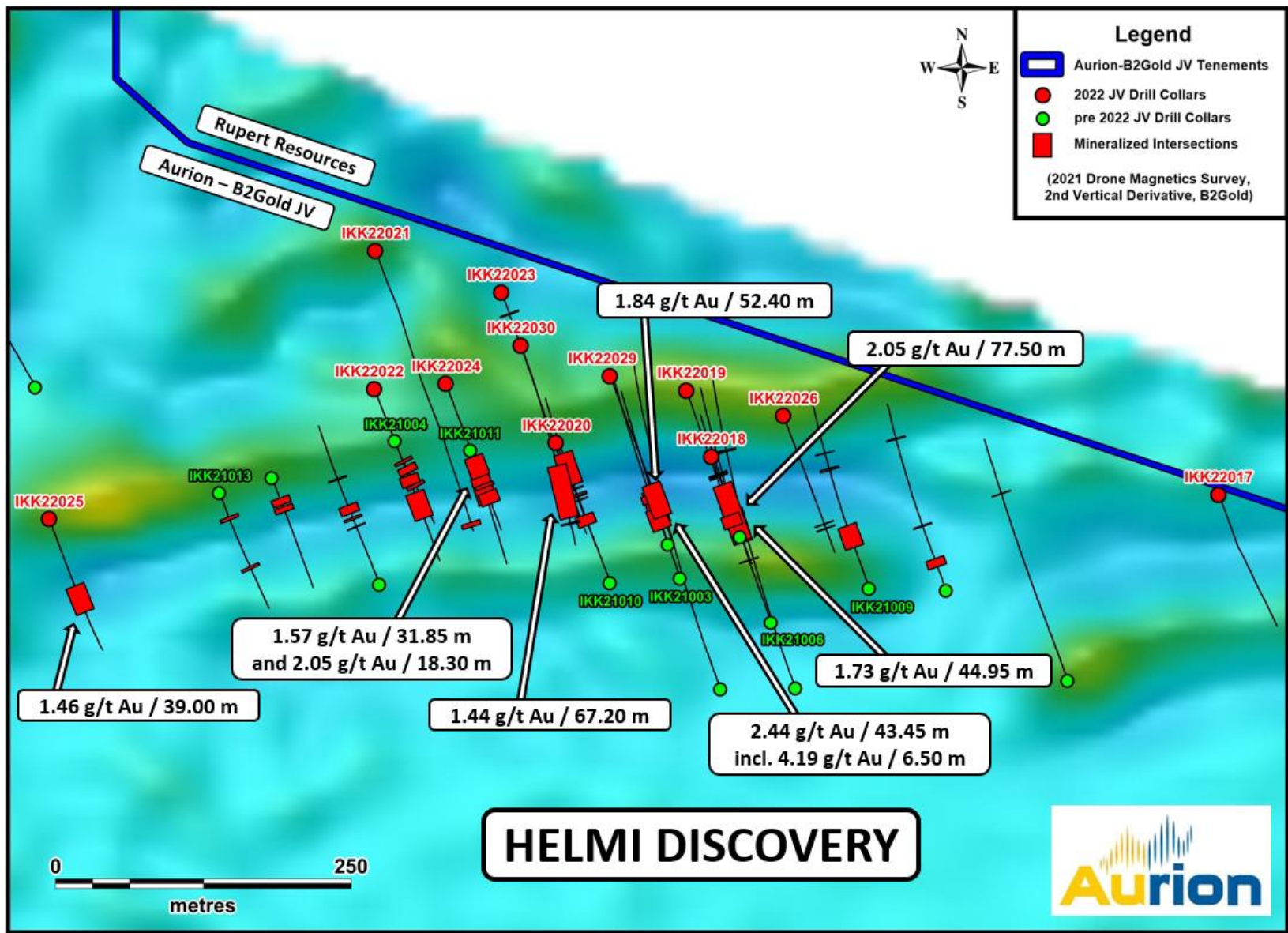


Figure 3: Drill hole locations. Aeromagnetic map as background.

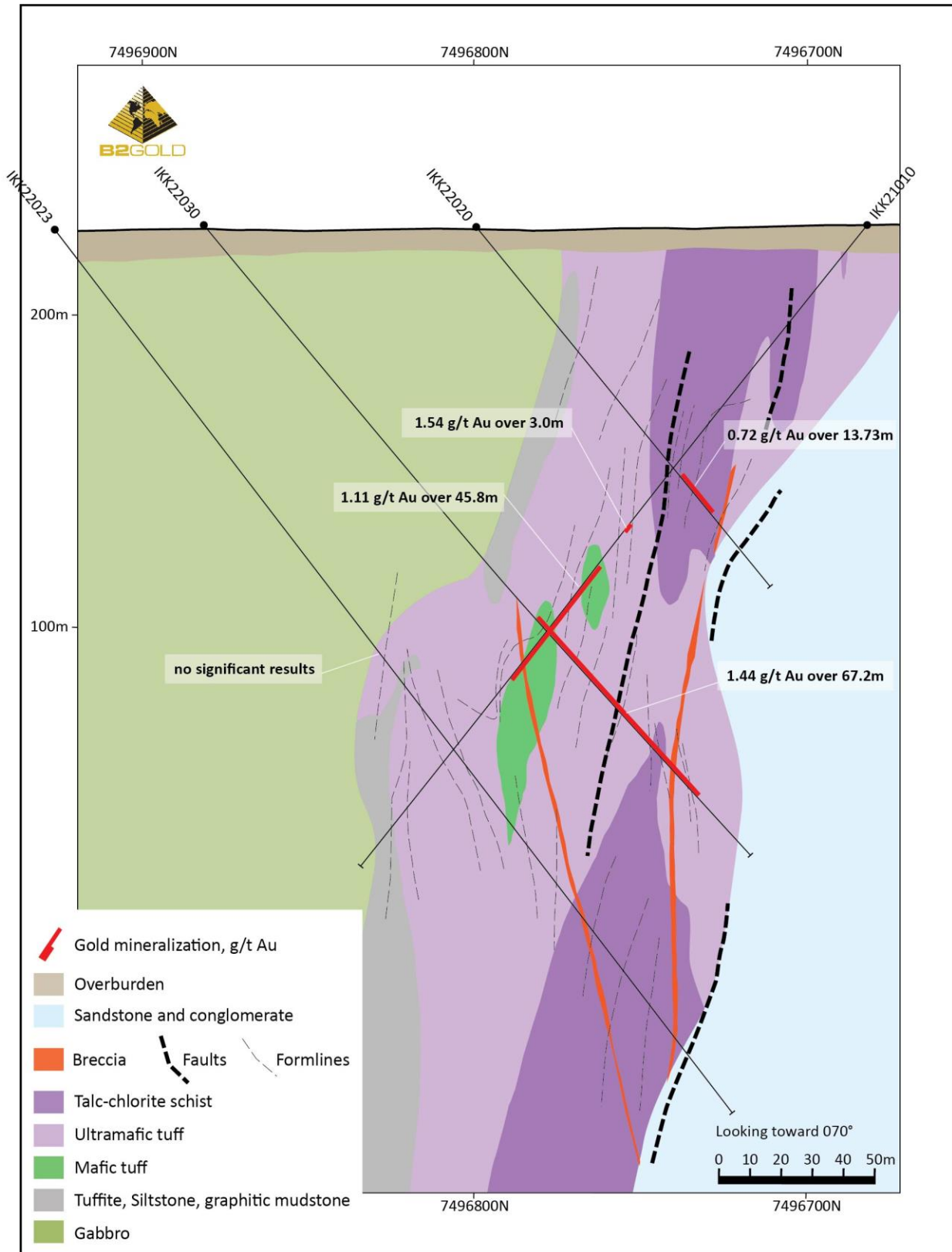


Figure 4: Cross section, holes IKK22020, IKK22023 and IKK22030

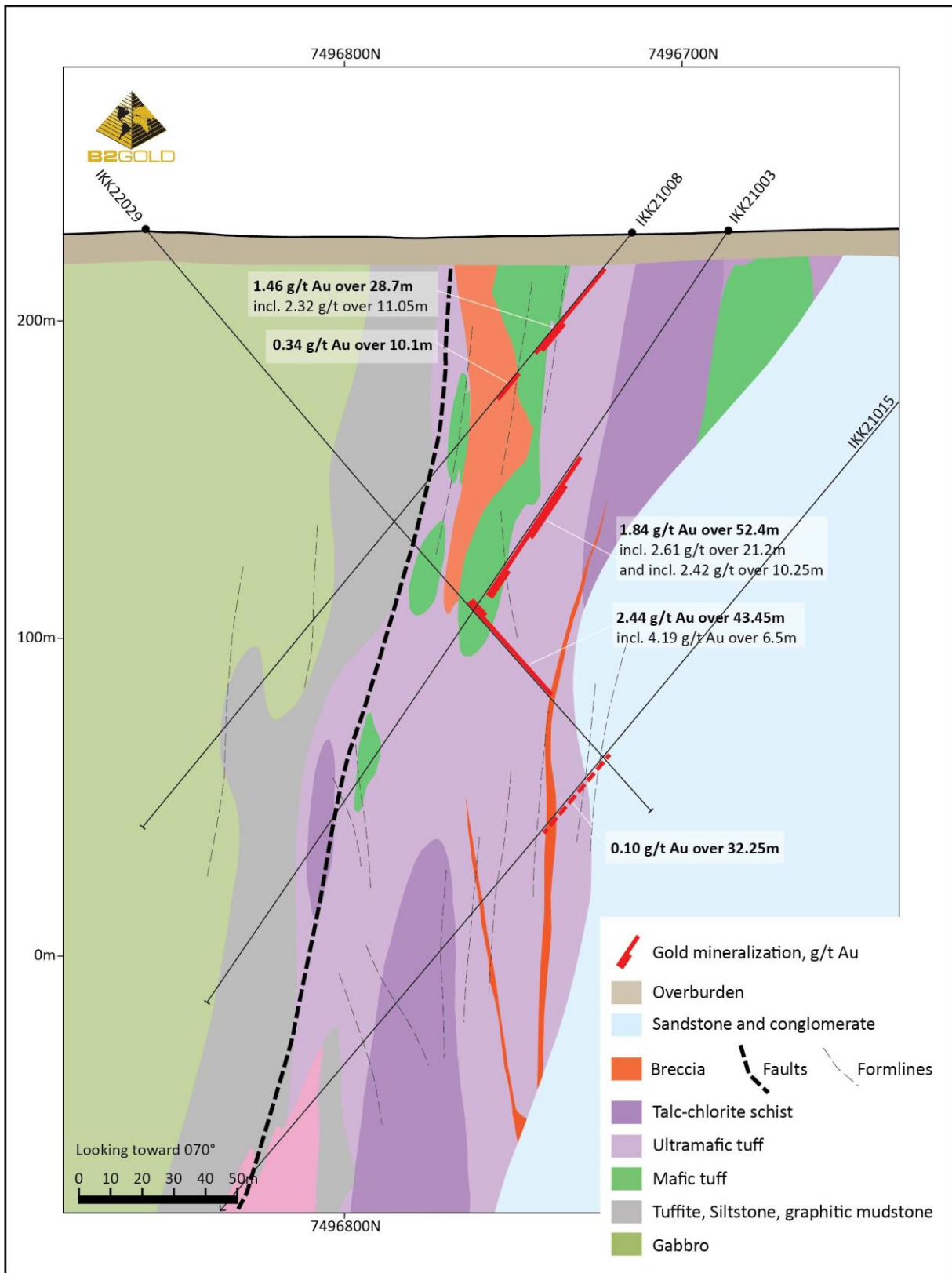


Figure 5: Cross section, hole IKK22029