



TSXV: AU; OTCQX: AIRRF

DISCOVERING THE NEXT MAJOR GOLD CAMP

Corporate Presentation January 2023



Forward-Looking Information

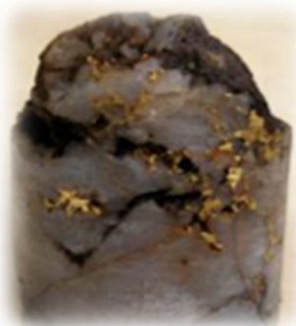


This presentation may contain "forward-looking information" (as defined in applicable Canadian securities legislation). Generally, these forward-looking statements can be identified by the use of forward-looking terminology such as "plans", "expects" or "does not expect", "is expected", "budget", "scheduled", "estimates", "forecasts", "intends", "anticipates" or "does not anticipate", or "believes", or variations of such words and phrases, or state that certain actions, events or results "may", "could", "would", "might" or "will be taken", "occur", "be achieved" or "has the potential to", and are based on expectations, estimates and projections considered to be reasonable by Aurion as of the date of this presentation. Actual results and outcomes may differ materially from what is expressed or forecasted in these forward-looking statements. Such statements are qualified in their entirety by the inherent risks and uncertainties surrounding future expectations. Among those factors which could cause actual results to differ materially are the following: market conditions and other risk factors listed from time to time in our reports filed with Canadian securities regulators on SEDAR at www.sedar.com.

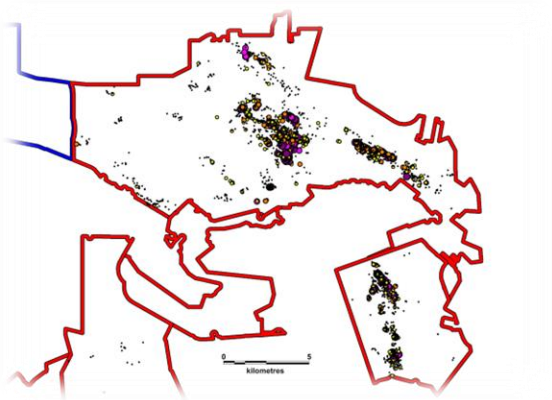
Information in this presentation has been furnished for your information only, is accurate at the time of posting, and may be superseded by more current information. Except as required by law, we do not undertake any obligation to update the information, whether as a result of new information, future events or otherwise.

Andrew Hussey, P.Geo., GIS Geologist and Database Manager for Aurion Resources Ltd., is a Qualified Person as defined by National Instrument 43-101 Standards of Disclosure for Mineral Projects and has approved the technical disclosure and verified the technical information in this presentation."

Discovering the Next Major Gold Camp



**High-Grade: 789 g/t over 2.9 m;
Top 10 holes avg 355 g*m**



**Exceptional Footprint: 8,500+
samples averaging 6.0 g/t Au**



District Scale: 1,000 km²



**Majors Invested: Kinross,
Newmont Goldcorp and B2Gold**



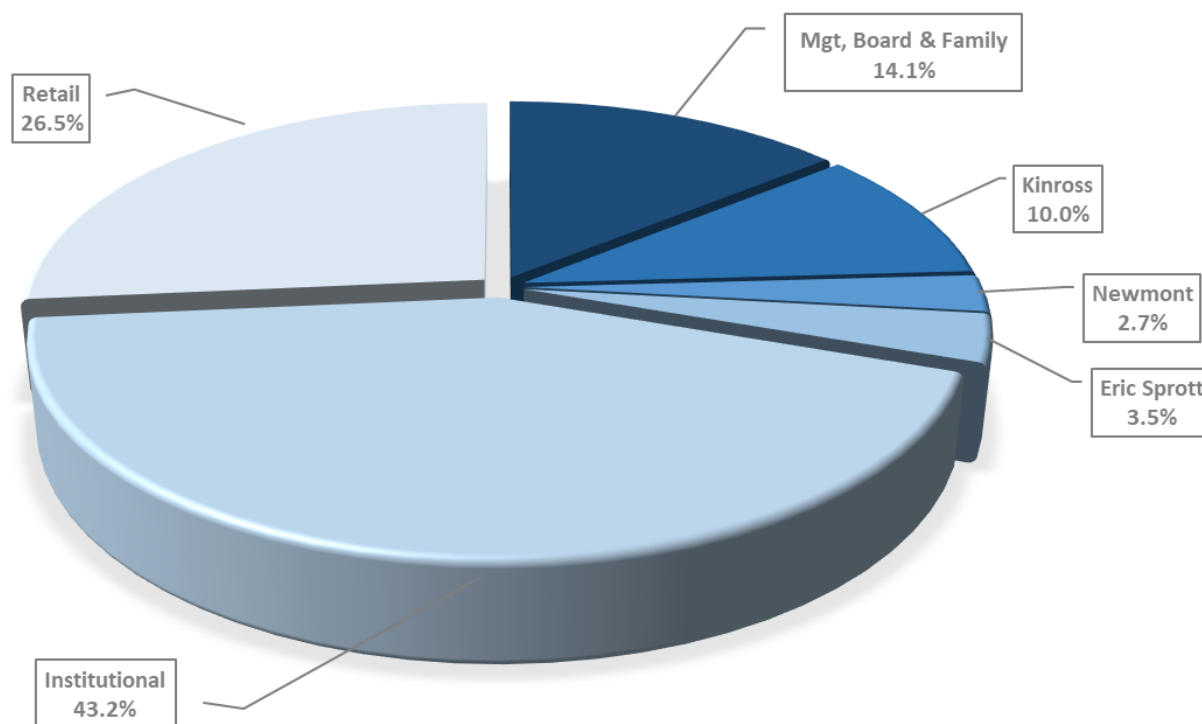
Top Jurisdiction: Finland



Cheap Relative Valuation

Ownership and Capital Structure

- 117.9 M shares / 7.9 M options/ 1.57 M broker warrants
- Market Cap: ~C\$70.7 M (As of December 31, 2022)
- Well-Funded:
 - Working Capital ~C\$15.2 M as of September 30, 2022

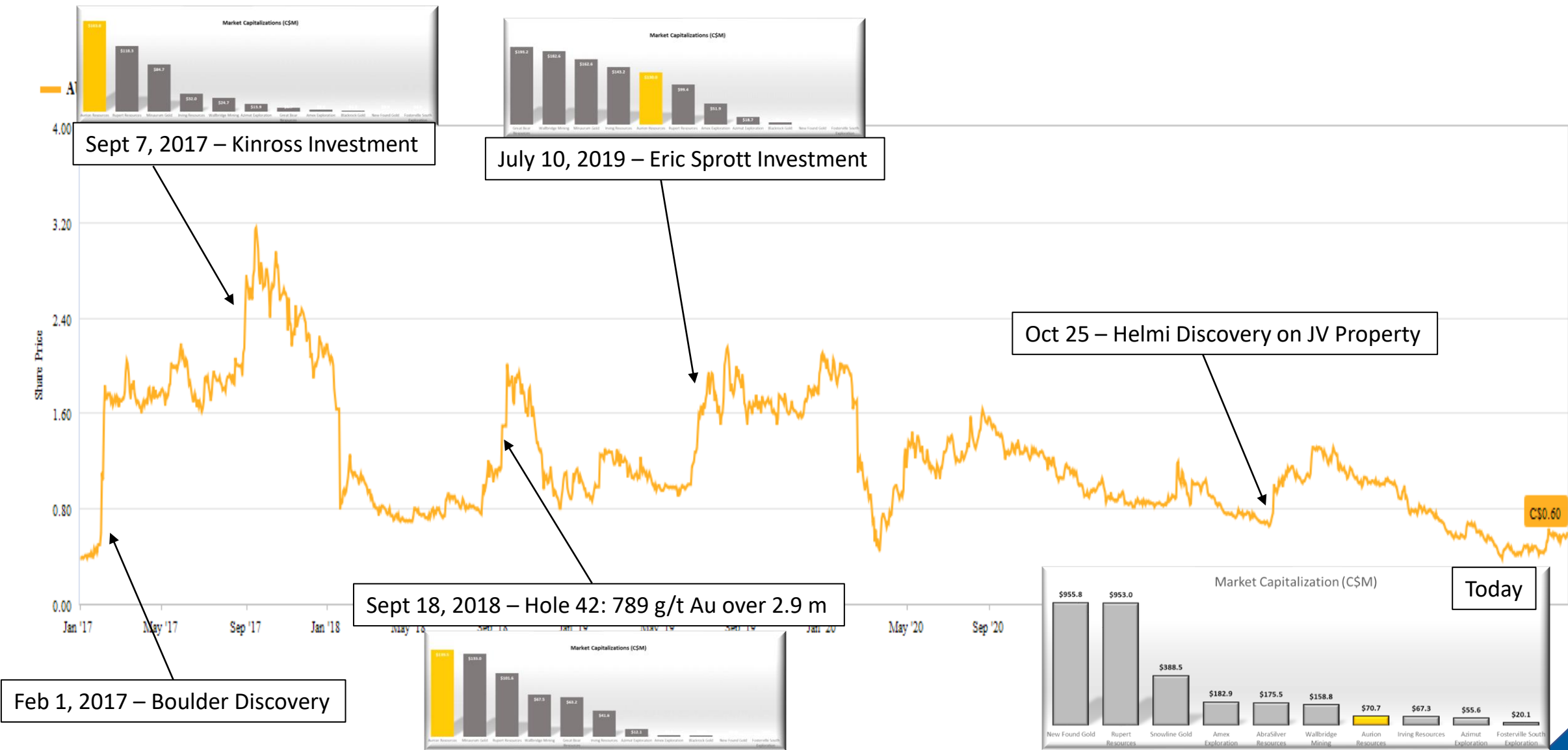


Konwave AG

Eric Sprott



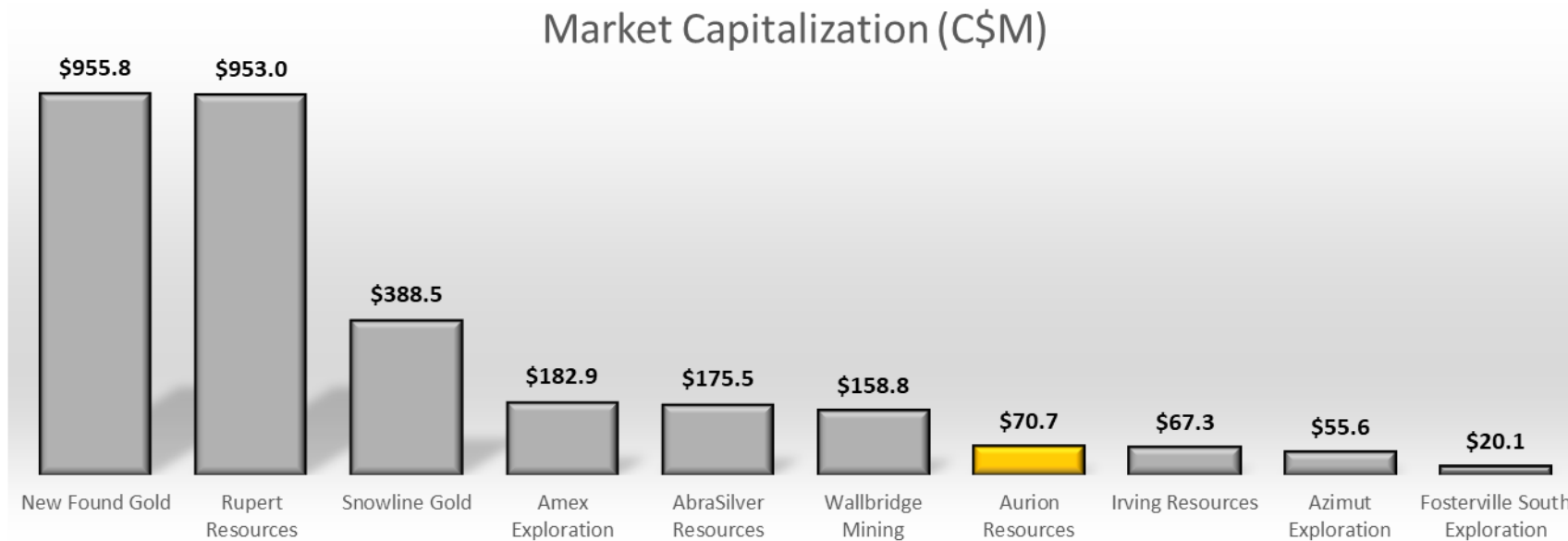
Expensive to Cheap – Despite Continued Success



Opportunity – Closing the Valuation Gap

Compared to peers Aurion trades at a discount

- Large land package
- High-grade gold
- Orogenic system
- Safe jurisdiction
- Tight share count



| Share Price (C\$) | \$5.45 | \$4.98 | \$2.94 | \$1.70 | \$0.35 | \$0.18 | \$0.60 | \$0.93 | \$0.70 | \$0.30 |
|-----------------------|---------|---------|---------|---------|-----------------|---------|----------------|--------|--------|-----------|
| Basic Shares O/S (M) | 175.4 | 191.4 | 132.2 | 522.7 | 103.2 | 882.4 | 117.9 | 72.4 | 79.4 | 68.2 |
| Market Cap (C\$M) | \$955.8 | \$953.0 | \$388.5 | \$182.9 | \$175.5 | \$158.8 | \$70.7 | \$67.3 | \$55.6 | \$20.1 |
| Net Cash (C\$M) | \$62.9 | \$37.1 | \$26.3 | \$32.02 | \$10.75 | \$22.3 | \$16.8 | \$16.4 | \$14.0 | \$16.3 |
| Country | Canada | Finland | US | Canada | Argentina/Chile | Canada | Finland | Japan | Canada | Australia |
| Land Package (000 Ha) | 150.0 | 59.5 | 127.0 | 19.3 | 134.2 | 73.9 | 100.0 | 48.4 | 77.4 | 138.6 |

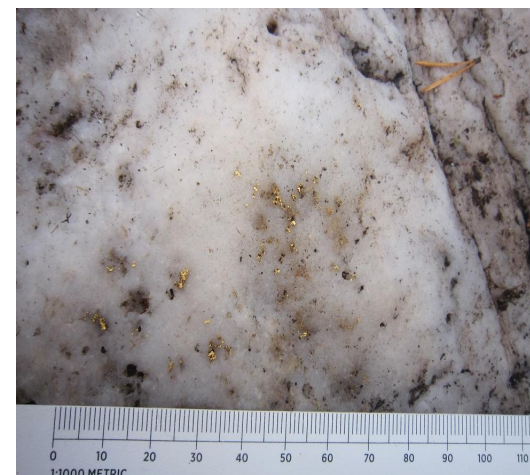
Source: S&P Capital IQ, Company documents

Finland – Like Discovering Timmins 110 Years Ago



Plate 36

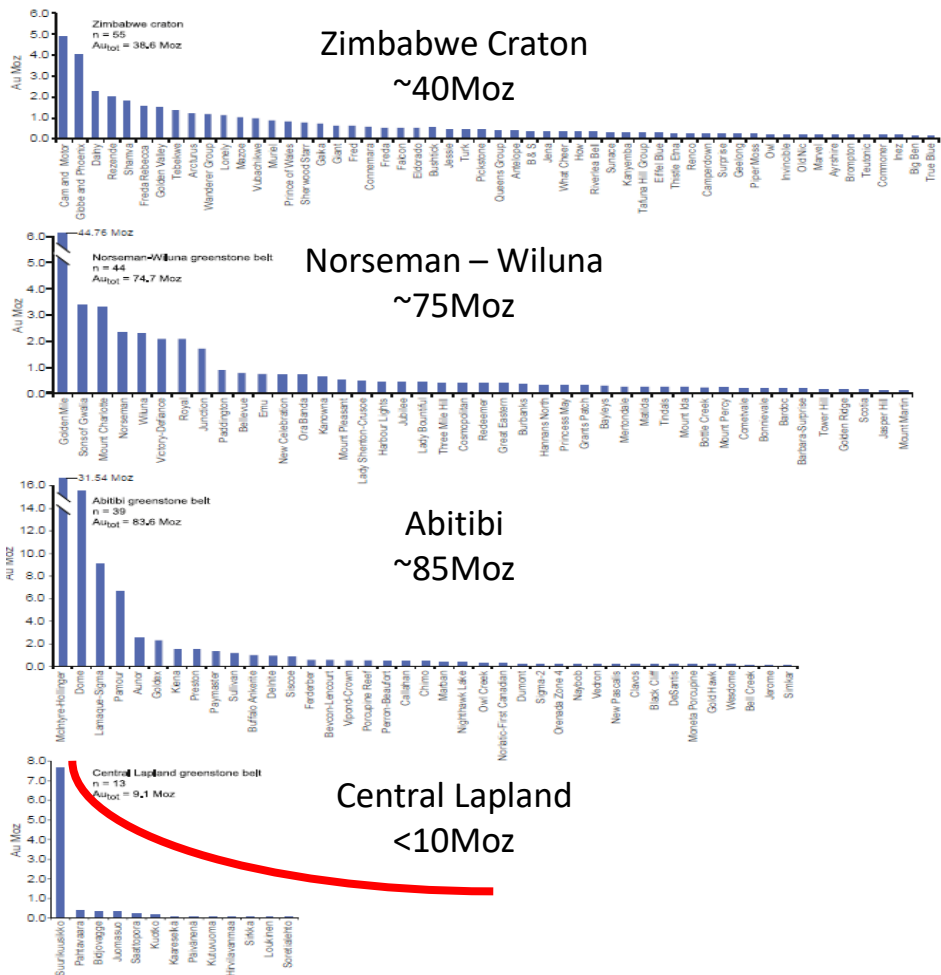
Summit of Dome, 1911. The Dome, a mound of quartz carrying spectacular concentrations of gold, became the Dome mine. (Courtesy of Ontario Archives Acc. 16959-215)



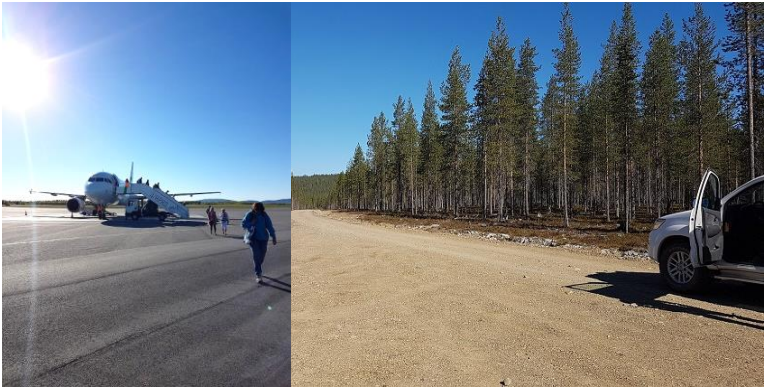
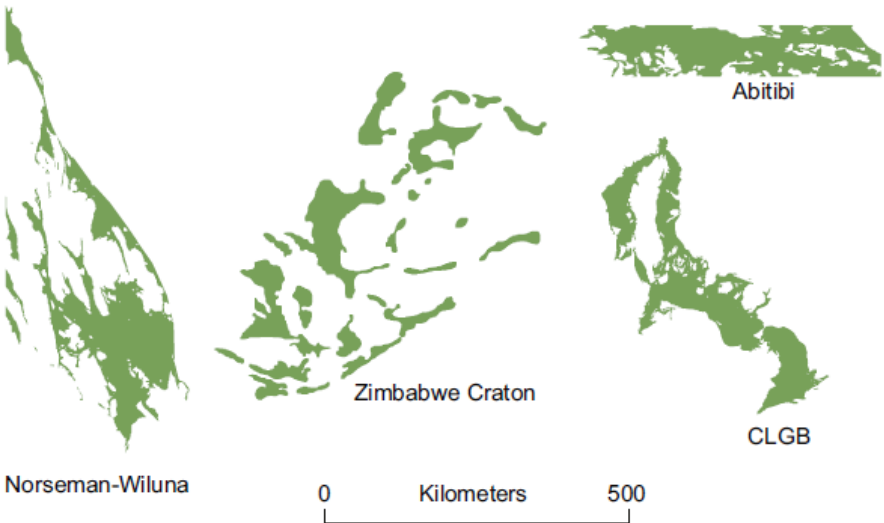
Finland – A Top Jurisdiction with Untapped Potential



Total Resources of the known orogenic gold deposits in greenstone belts

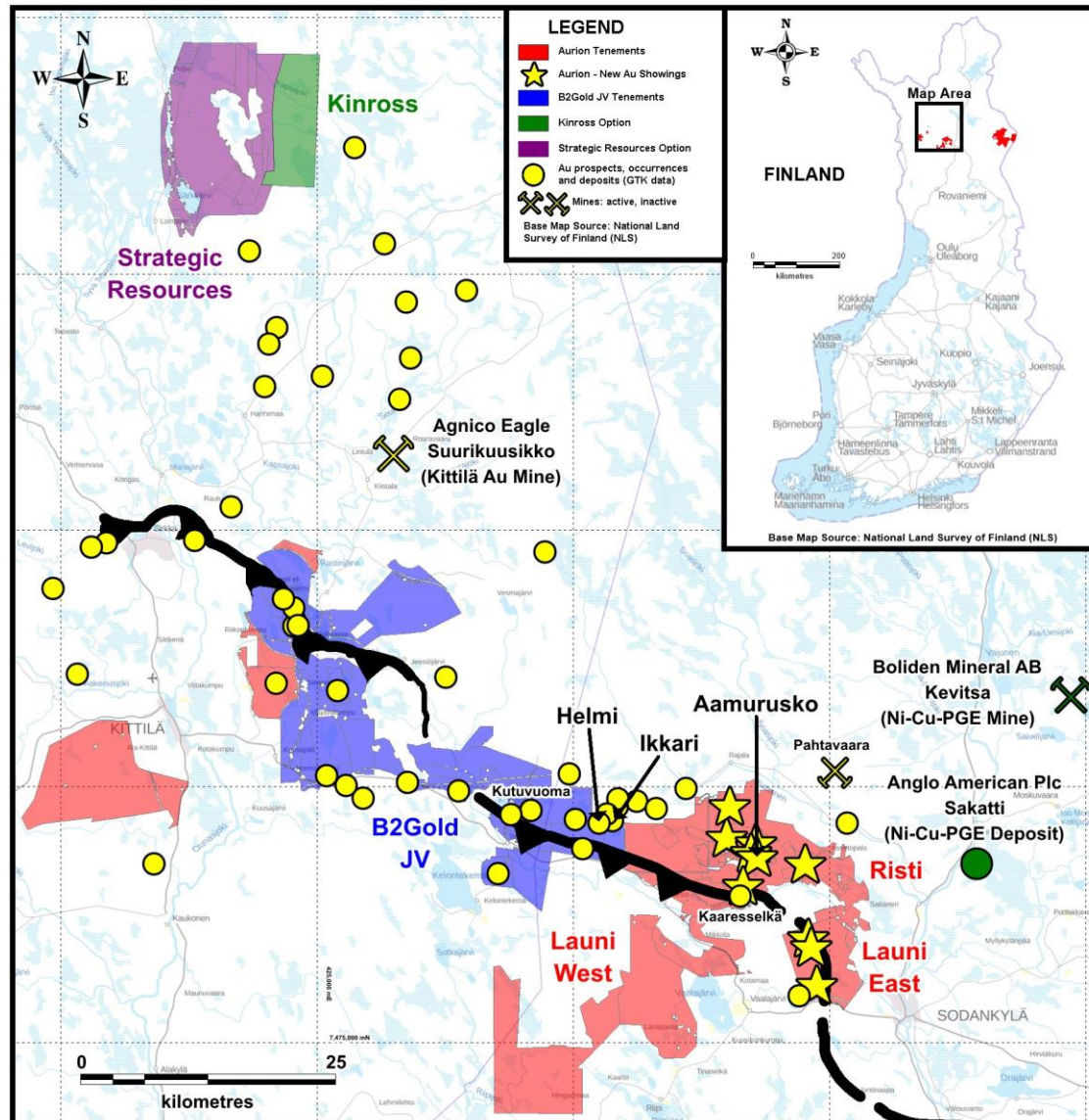


Size comparison of the CLGB to Norseman-Wiluna, Abitibi, and Zimbabwe Craton greenstone belts



Source: Niiranen, T., Lahti, I. and Nykänen, V. (2015) The Orogenic Gold Potential of the Central Lapland Greenstone Belt, Northern Fennoscandian Shield. In W.D. Maier, R. Lahtinen, H. O'Brien, Eds., Mineral Deposits of Finland (pp 733-752). Elsevier Inc.

First Mover Advantage – District Scale Land Position



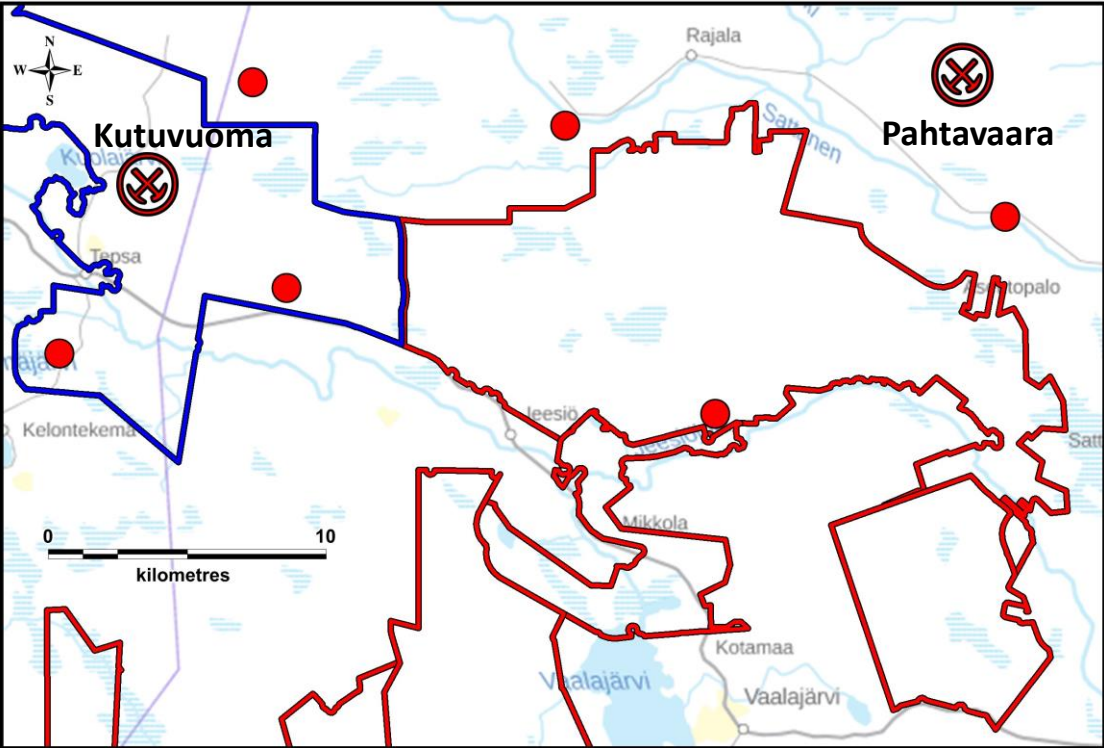
Interests in ~1,000 km² of land in the Central Lapland Greenstone Belt

- **Risti (100%):** ~167 km²
- **Launi (100%):** ~140 km²
- **B2Gold JV:** ~384 km²
 - Kutuvuoma-Ikkari, Sinermä, Kuortis, Ahvenjarvi
- **Kinross JV:** ~53 km²
- **Strategic Resources:** 18.3% ownership

Emerging Gold Camp – Over 20 Discoveries Since 2016

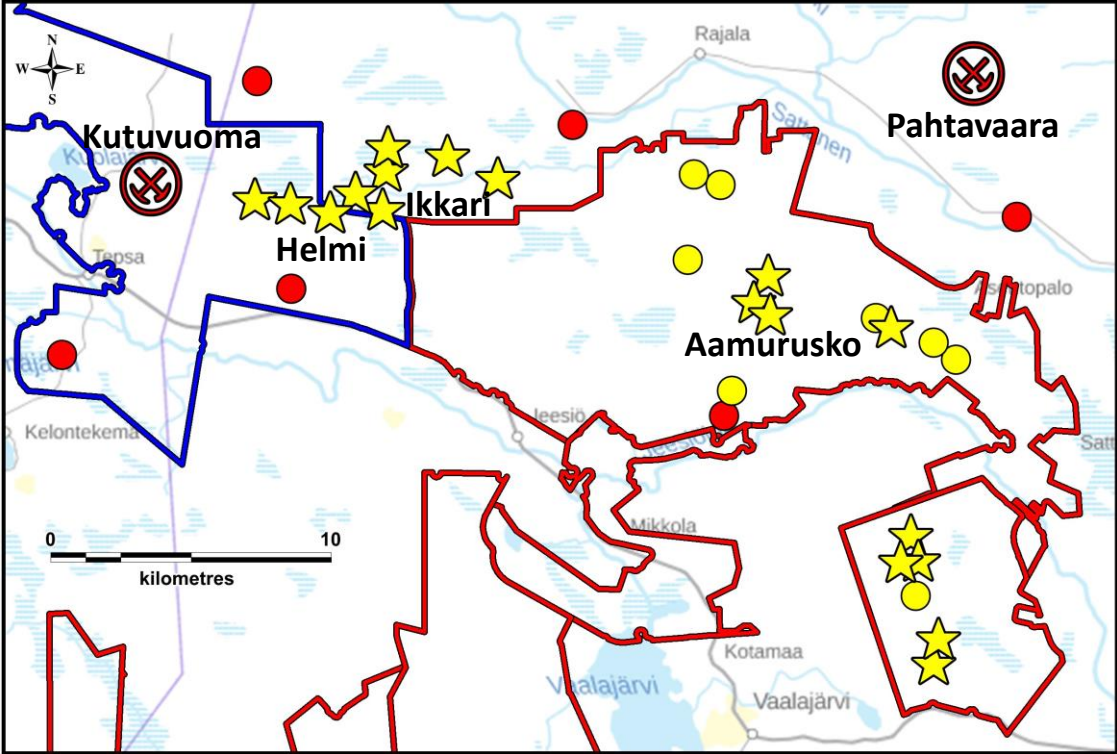


Pre 2016



Aurion 100 % owned properties
B2Gold JV property

Today

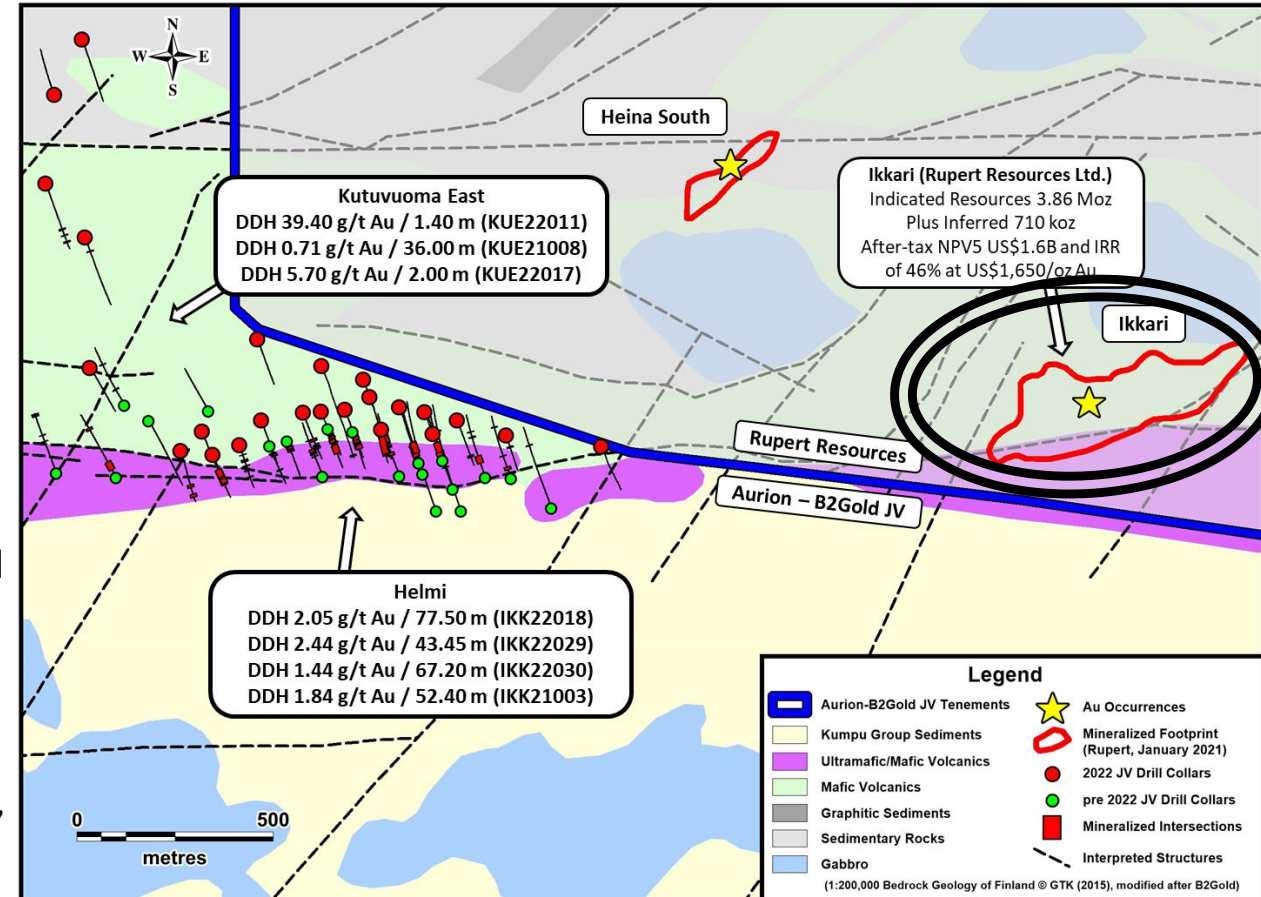


Rupert's US\$1.6 Billion Ikkari Project

May 12, 2020 – Ikkari Discovery
• 1.8 g/t Au over 137 m

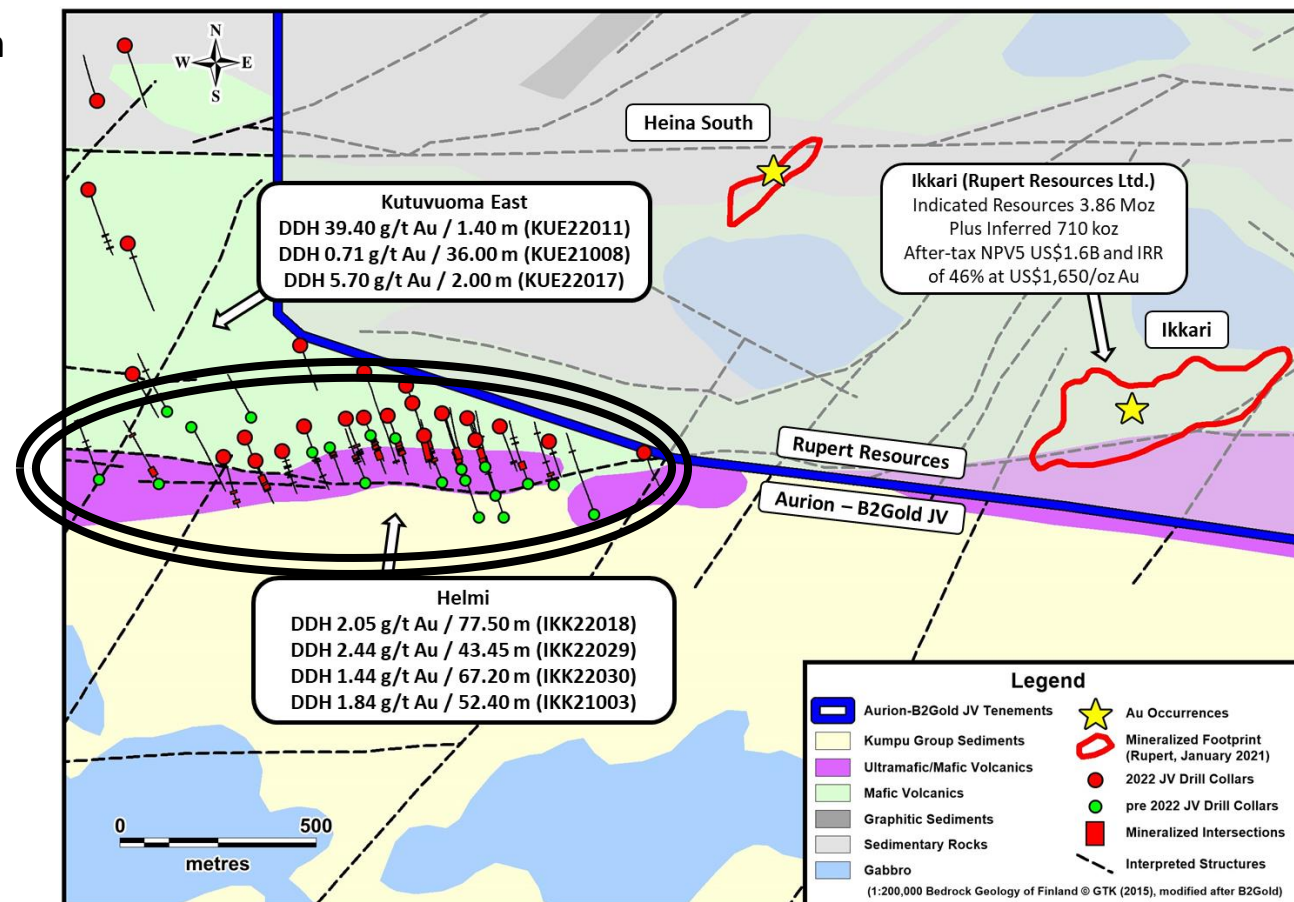


- **Large Resource:** 3.68 Moz indicated resource and 710 koz inferred resource
- **PEA Study:** After-Tax NPV(5%) of US\$1.6B and IRR of 46% using a US\$1,650/oz gold price
- **Headline Intercepts:** 4.40 g/t Au over 188 m, 8 g/t Au over 103 m, 4.20 g/t Au over 167 m, and 4.30 g/t Au over 158 m
- Structure and geology interpreted to extend to JV property
- Current market capitalization about C\$950 M

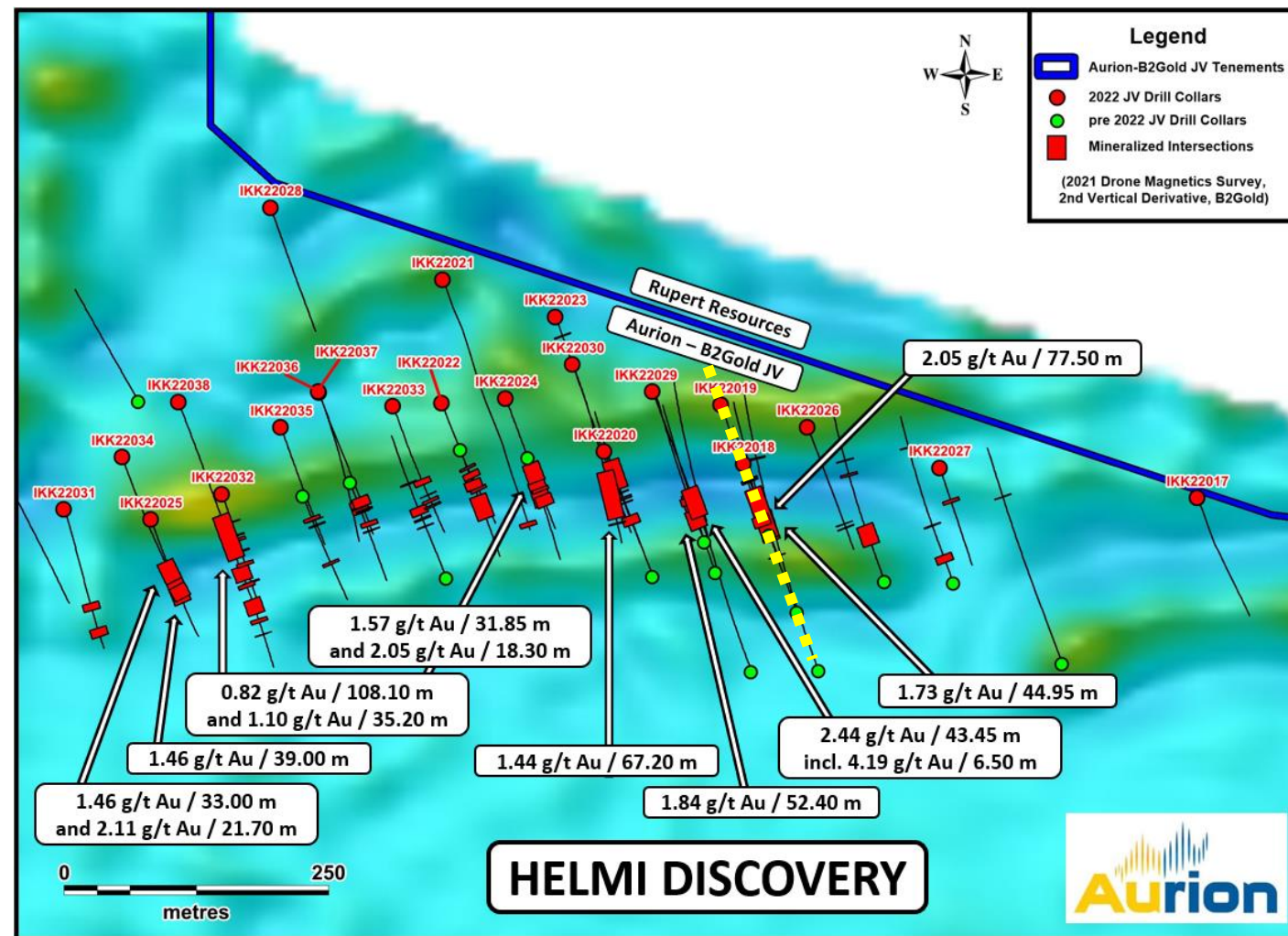
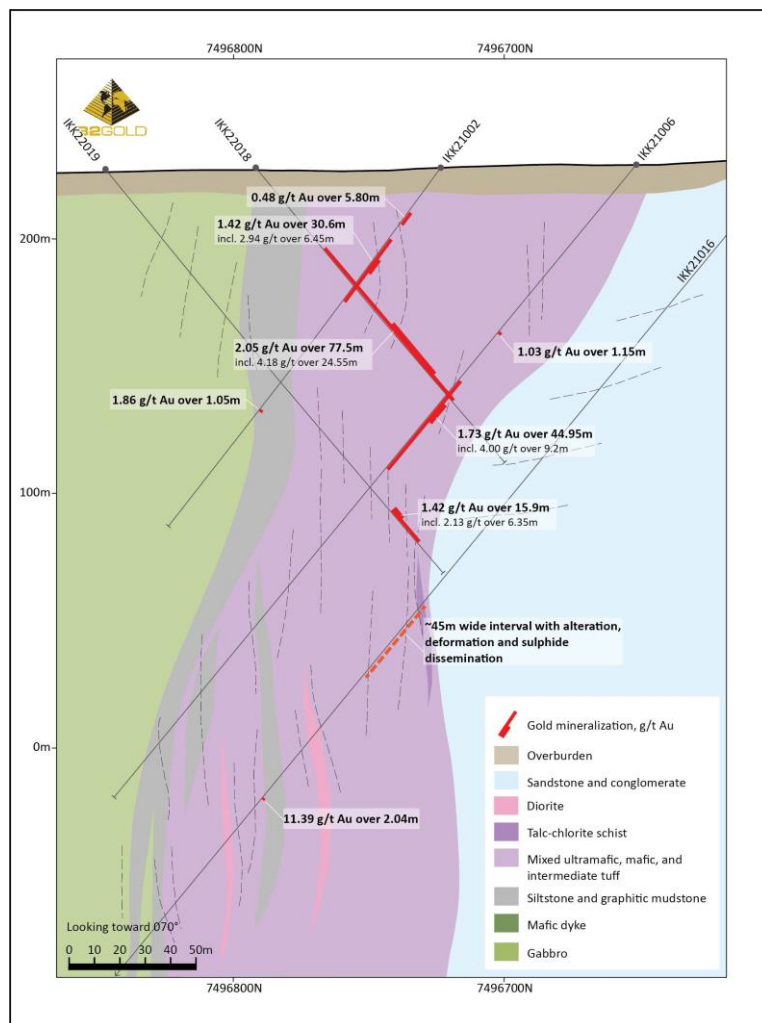


JV with B2Gold – Helmi Discovery

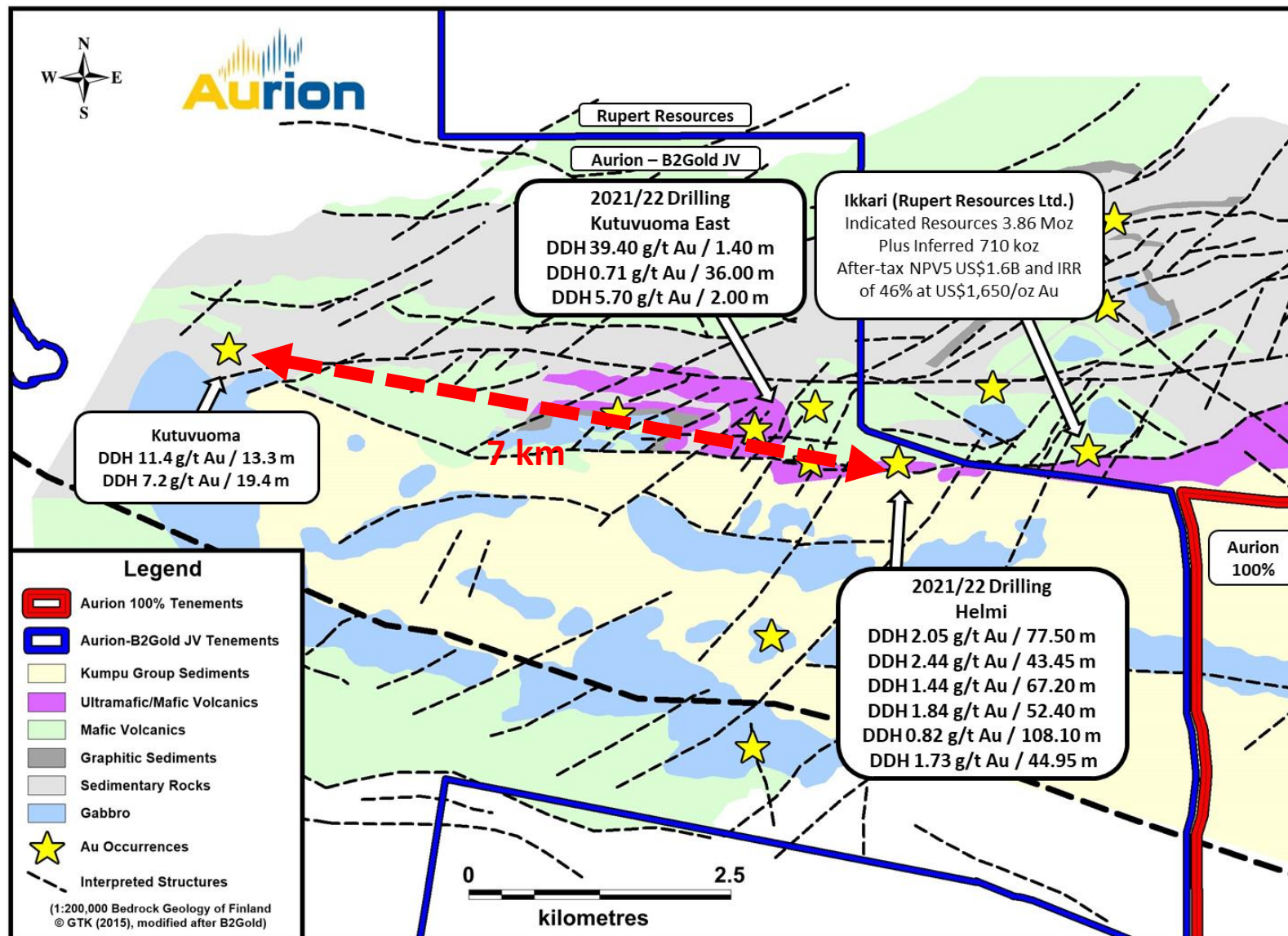
- Maiden drill program completed in 2021, 20 holes, 5,201.5 m
- Follow up drill program in 2022 expanded to ~17,000 m
- Gold mineralization intersected along 2 km strike and extend to at least 500 m depth
- Highlight intercepts:
 - 2.05 g/t Au / 77.50 m
 - 2.44 g/t Au / 43.45 m
 - 1.44 g/t Au / 67.20 m
 - 1.84 g/t Au / 52.40 m
 - 0.82 g/t Au / 108.10 m
 - 1.73 g/t Au / 44.95 m
 - 1.11 g/t Au / 45.80 m
 - 1.46 g/t Au / 33.00 m
- Prospective geological sequence extends 8 km within the JV property



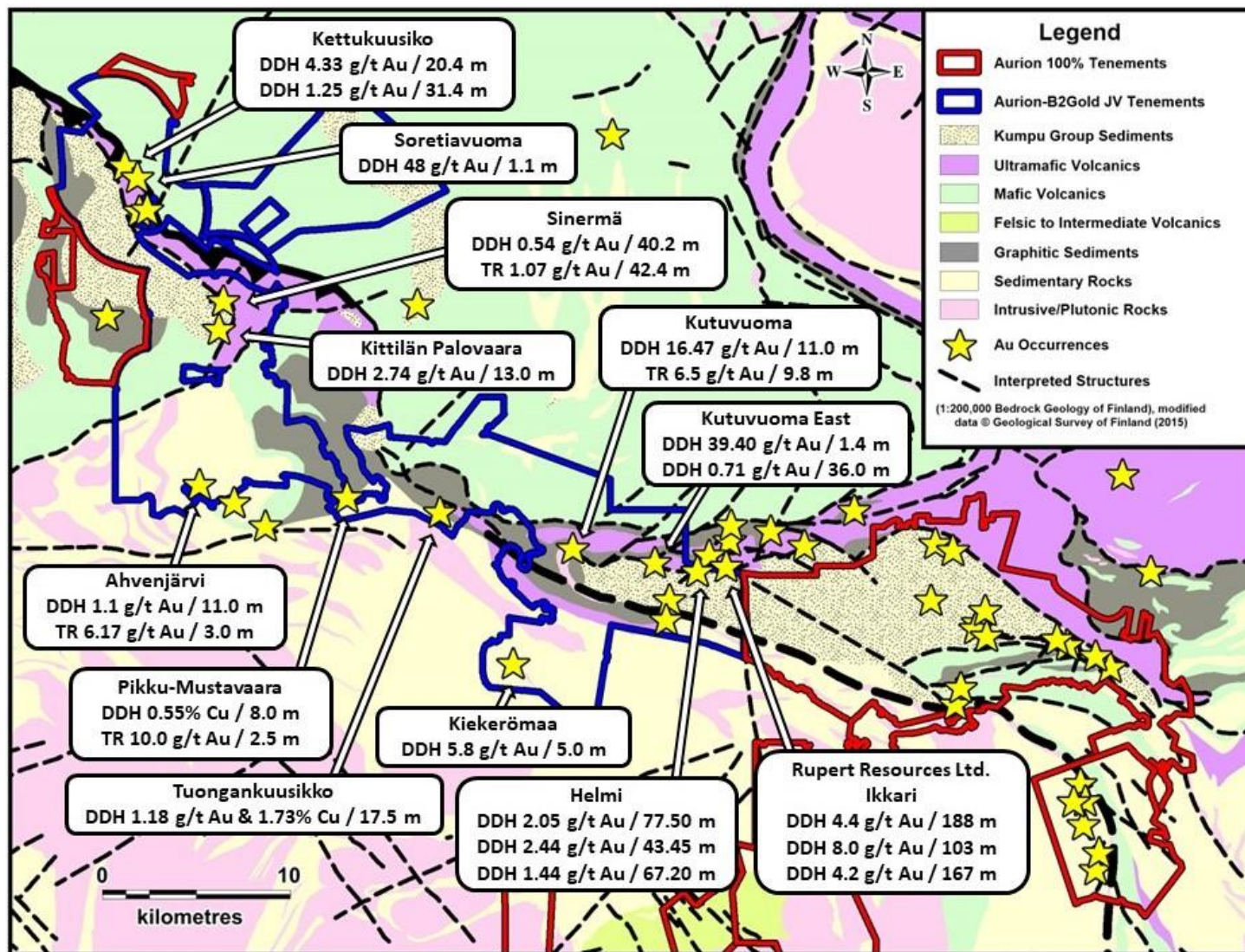
JV with B2Gold – Helmi Discovery



JV with B2Gold – Helmi-Ikkari-Kutuvuoma Corridor



JV with B2Gold – Multiple Discoveries

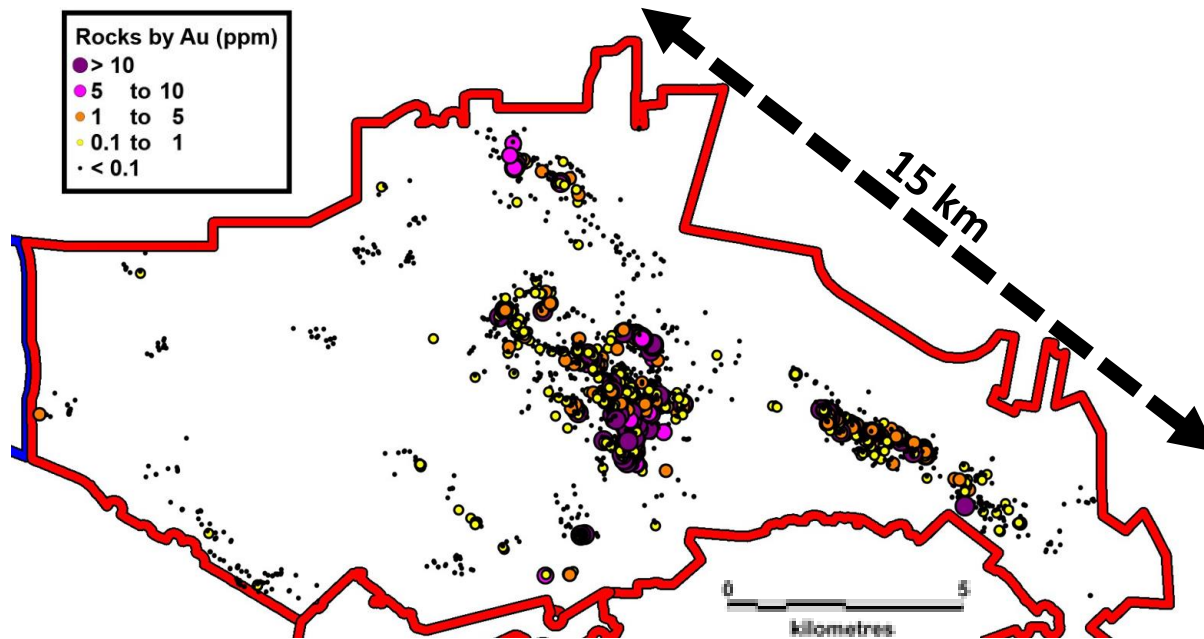


- JV: B2Gold 70%, Aurion 30%
- Large land package ~384 km²
- Multiple gold prospects
- 2022: C\$13.5 M incl. ~17,000 m of drilling
- Focus on Helmi Discovery and Kutuvuoma-Ikkari corridor

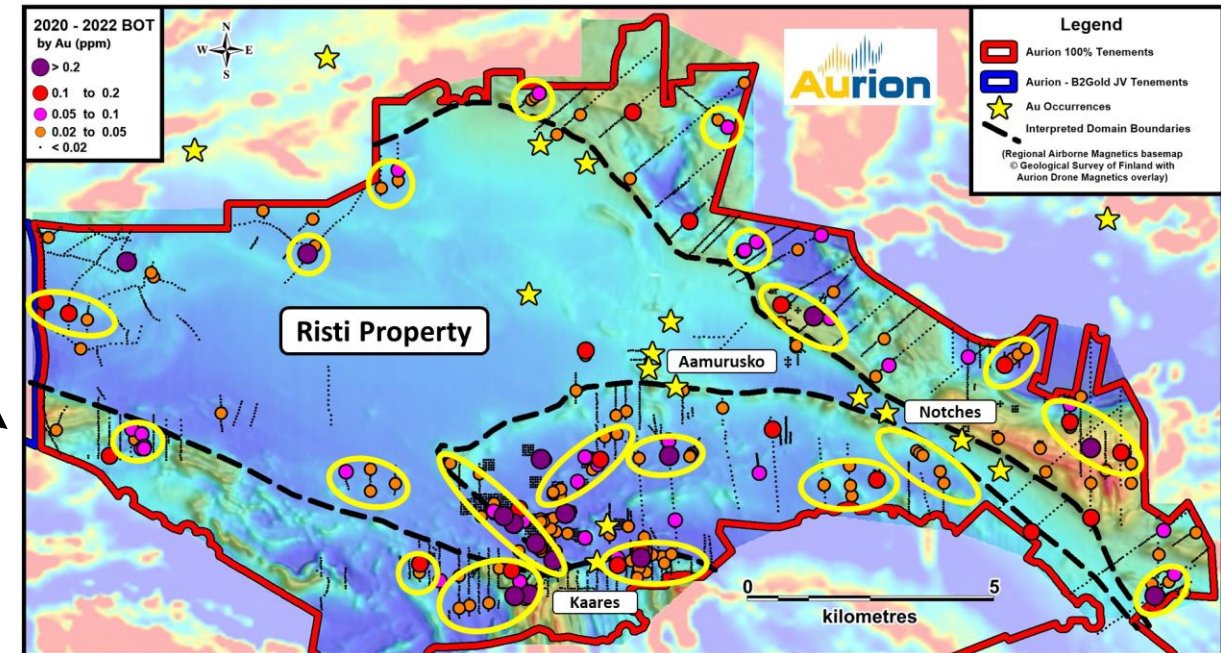
Risti – Transitioning Focus from Sediments to Volcanics

- Over 8,500 samples averaging ~ 6 g/t Au
- Tens of kms of prospective structural trends to be explored.

- ~20 targets identified along domain boundaries, using Base of till sampling and geophysics
- Key tool in discovery of Ikkari (Rupert Resources), Kittilä (Agnico Eagle), Sakatti (Anglo American)

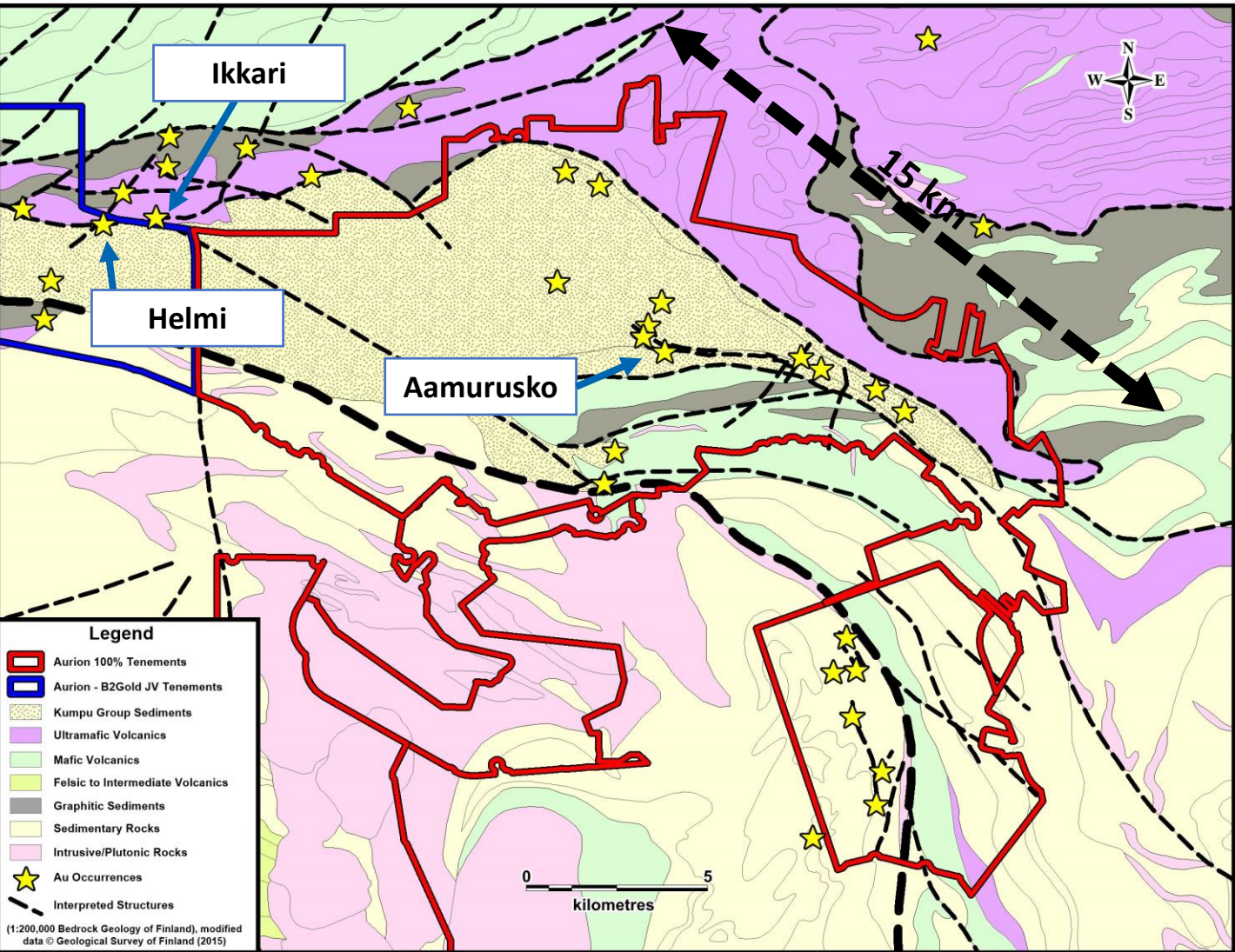


Rock samples

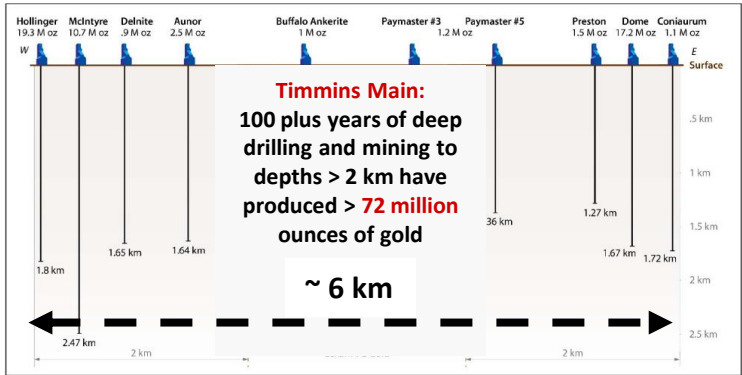
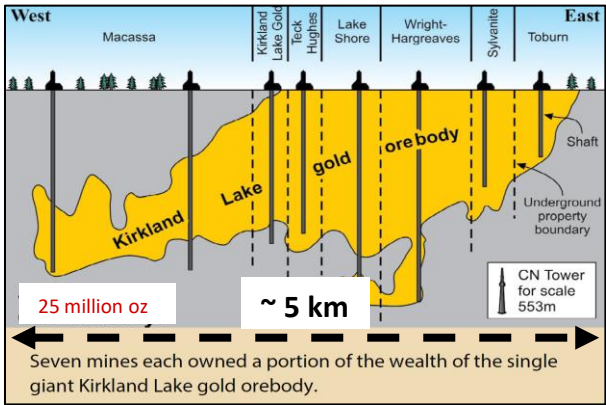


Base of till samples

Risti & Launi – Extensive Surface Footprint



- Analogous in size and geology to major gold camps



Risti – Aamurusko – Near-Surface Gold Mineralization

Aamurusko NW

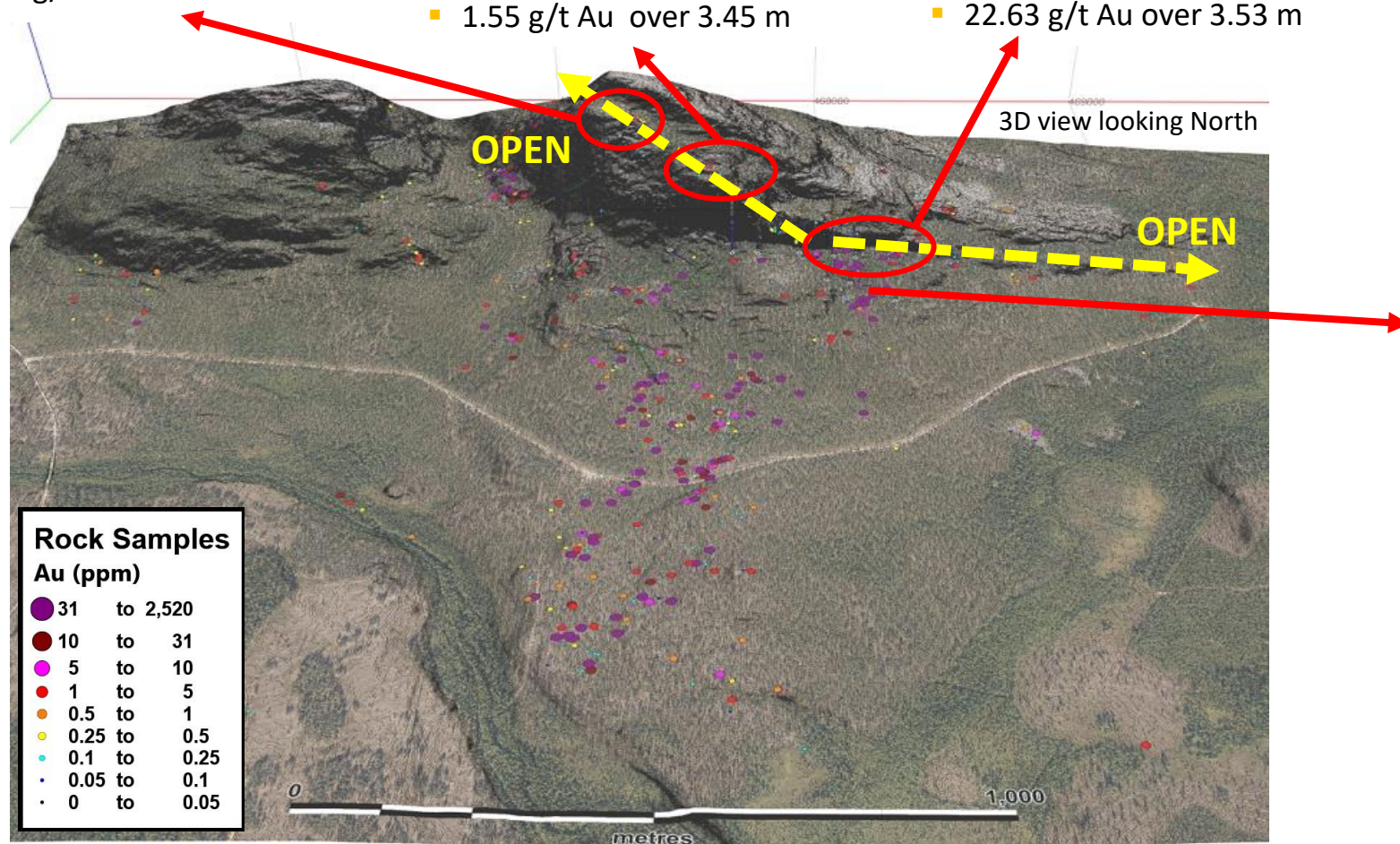
- 9.42 g/t Au over 28.22 m
- 23.41 g/t Au over 11.10 m
- 6.84 g/t Au over 19.00 m

Gap Zone

- 4.64 g/t Au over 3.10 m
- 1.69 g/t Au over 7.75 m
- 8.63 g/t Au over 0.75 m
- 1.55 g/t Au over 3.45 m

Aamurusko Main

- 789.06 g/t Au over 2.90 m
- 42.28 g/t Au over 4.00 m
- 24.50 g/t Au over 4.75 m
- 22.63 g/t Au over 3.53 m

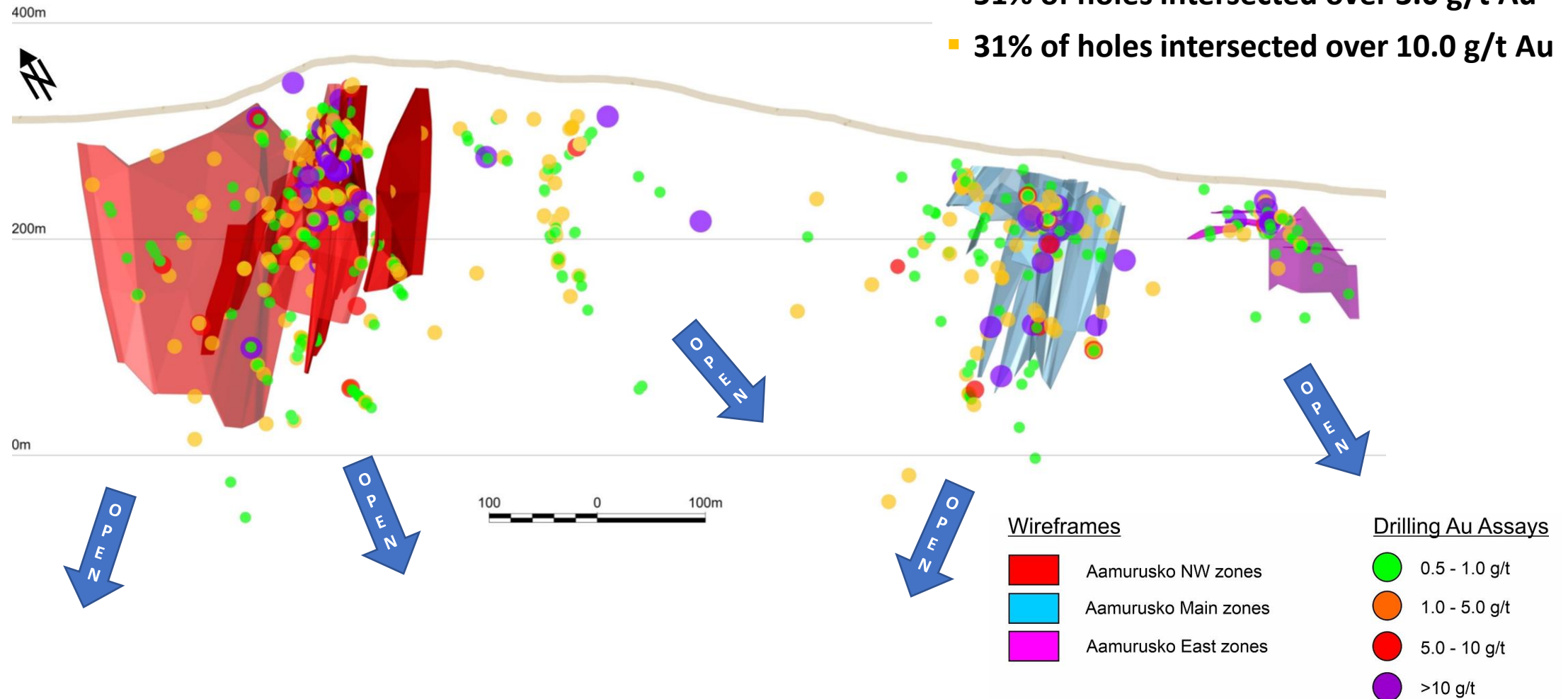


Finally ... The End of Helicopters

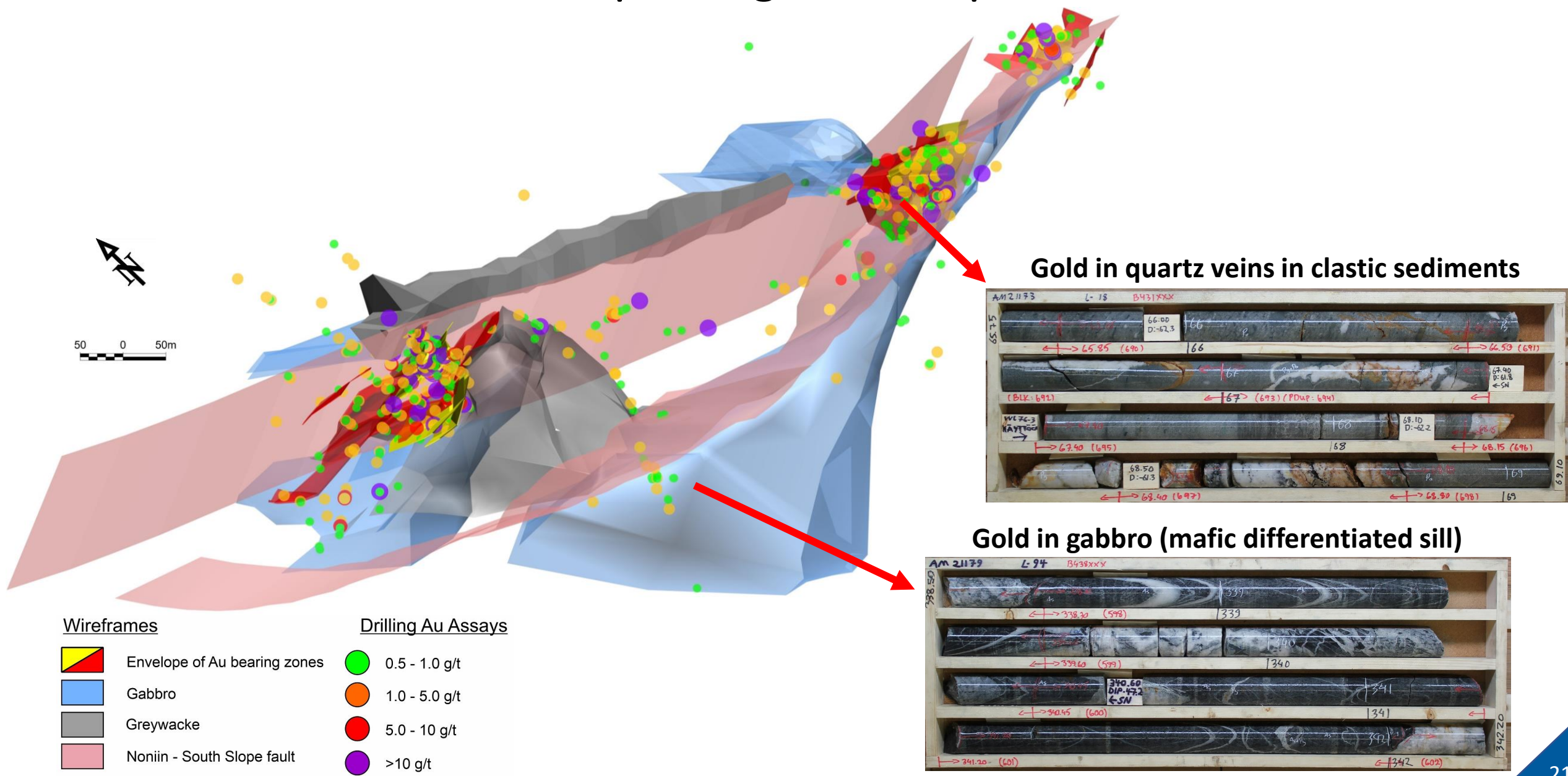


Risti – Aamurusko – Multiple Targets for Expansion

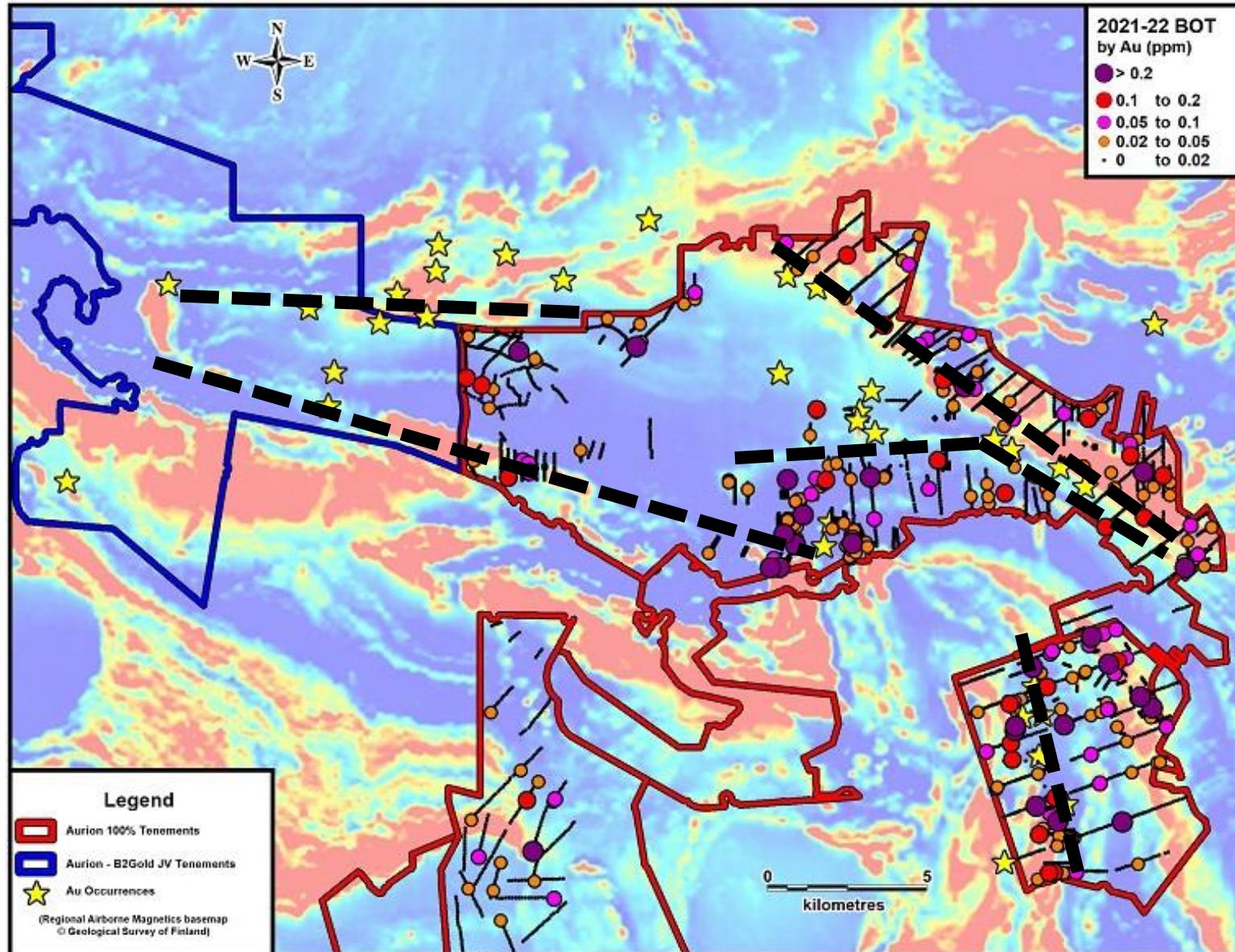
- 80% of holes intersected over 1.0 g/t Au
- 51% of holes intersected over 3.0 g/t Au
- 31% of holes intersected over 10.0 g/t Au



Risti – Aamurusko – Multiple Targets for Expansion

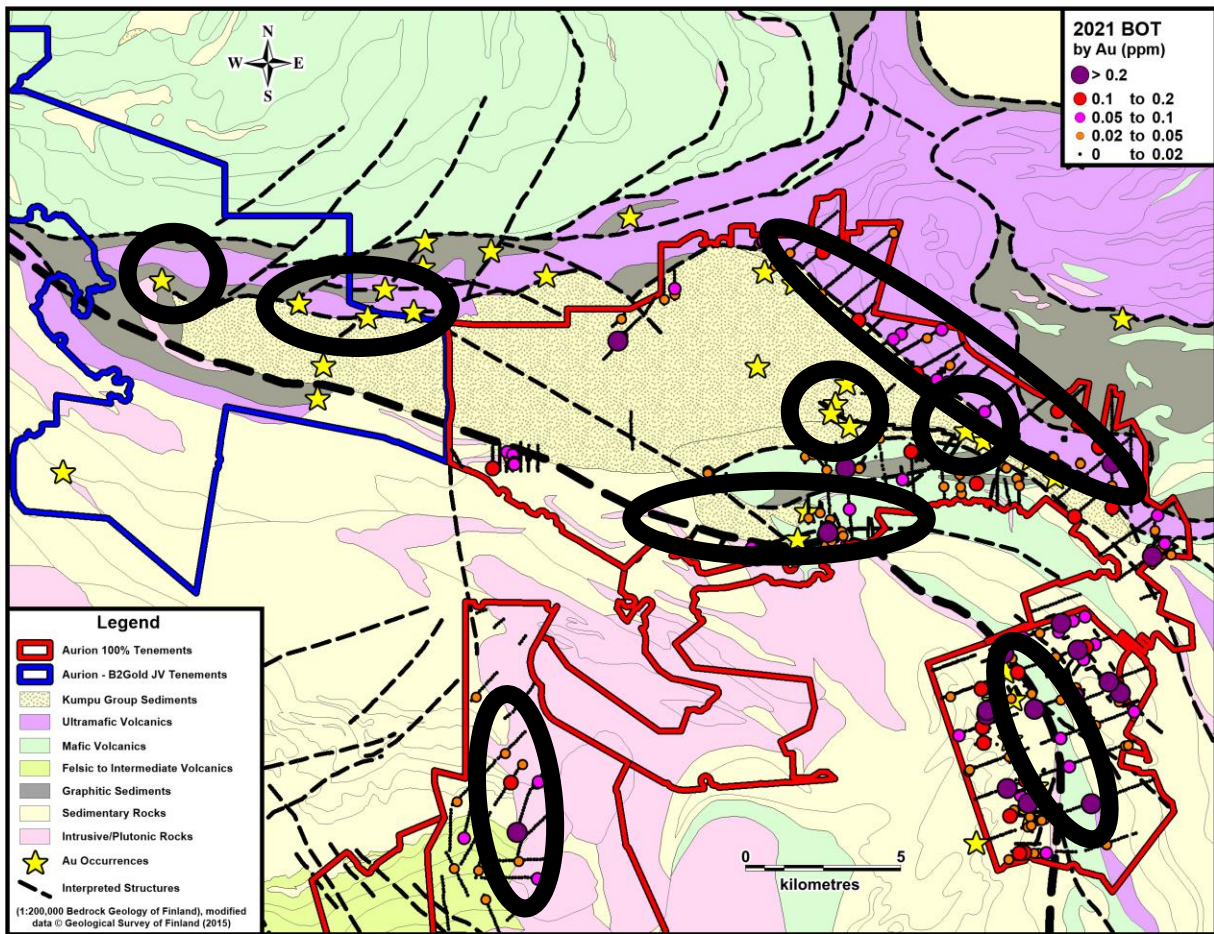
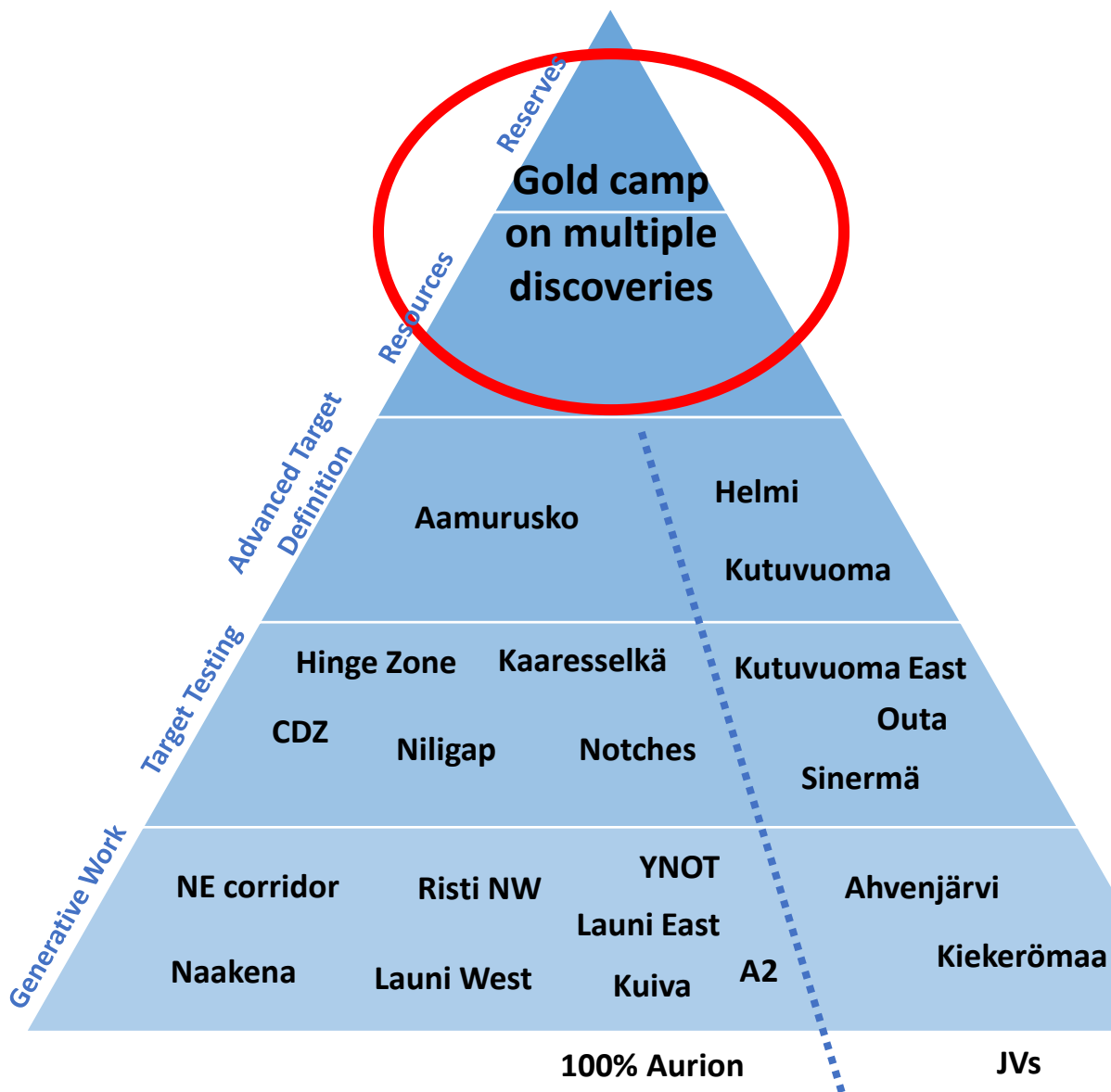


Risti & Launi – Regional Potential

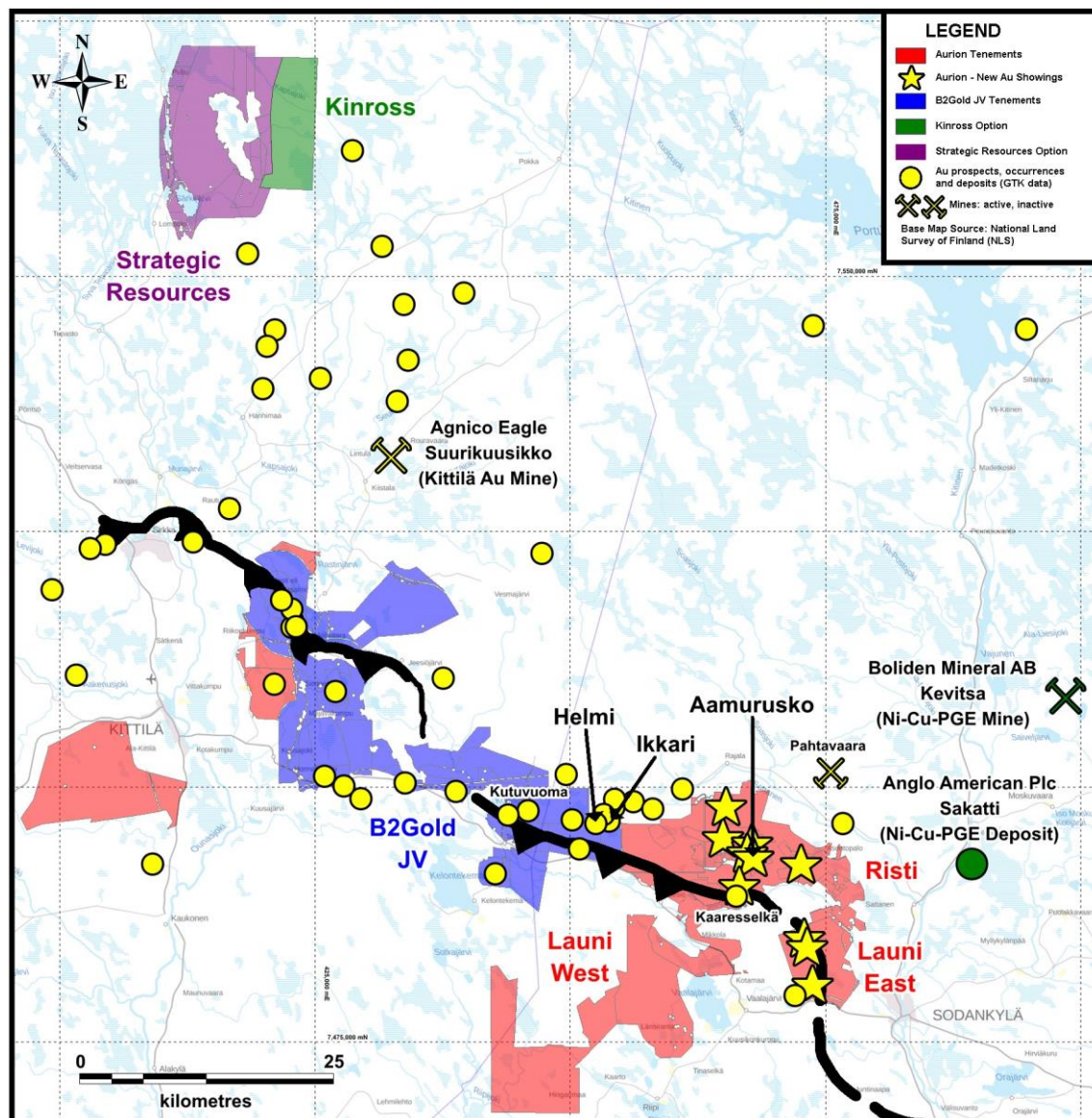


- Tens of kms of prospective structural trends to be explored.
- A number of gold in till anomalies identified in previously unexplored areas.
- Gold in till anomalies encountered within several geologic settings including volcanic, sedimentary and intrusion related domains.
- Base of till sampling and geophysical surveys behind most significant discoveries (Kittilä Mine, Sakatti, Ikkari) in Central Lapland Greenstone Belt.

Methodical Approach to Exploration



Value From Multiple Opportunities



Kinross JV

- Northern extension of Hanhimaan Shear
- Numerous gold showings

Strategic Resources

- 18.3% ownership of the company
- Vanadium development projects
- Part of Lumina Group

B2Gold JV

- Helmi discovery: 2.05 g/t Au over 77.5 m
- Multiple gold prospects
- Next to the Ikkari discovery by Rupert Resources

Risti and Launi

- 100% ownership
- High-grade, near surface discoveries
- Multiple gold prospects

Management and Board



Chairman – David Lotan, CPA, CA

- President of LHI, an investment company focused on natural resource opportunities
- Founder and CEO of the Polar Structured Products – sold to major Canadian Financial Institution
- Portfolio manager for the Ontario Teachers' Pension Plan

CEO and Director – Matti Talikka, M.Sc., FAusIMM(CP)Geo

- Various global positions at Outotec most recently as Director Geometallurgy and Project Evaluation
- Former General Manager Exploration at Dragon Mining focusing on exploration and project development in Finland and Sweden
- Non-executive director of Aurion since 2015, appointed as CEO in July 2020

Director – Kerry E. Sparkes, M.Sc., P. Geo

- Over 30 years of experience in the minerals industry as an exploration geologist and an executive
- Explored for, delineated and developed two major Canadian gold deposits, both of which were subject of takeovers
- Currently the Vice President of Geology for Franco-Nevada

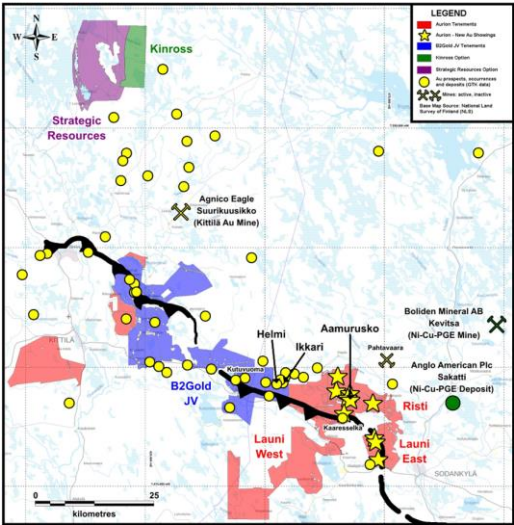
CFO – Mark Serdan, CPA, CA, CFA

- Over 20-year career in investment management and banking
- Recipient of multiple Lipper awards for investment performance in precious metals, energy and natural resources

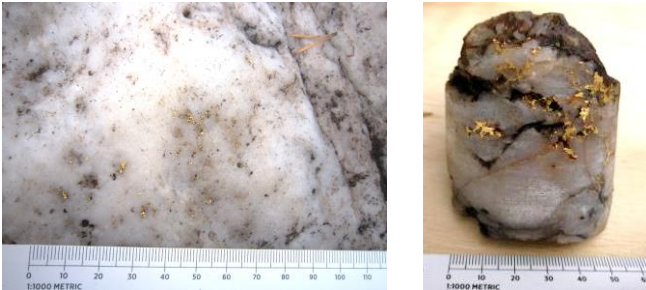
Aurion Resources - Discovering the Next Major Gold Camp



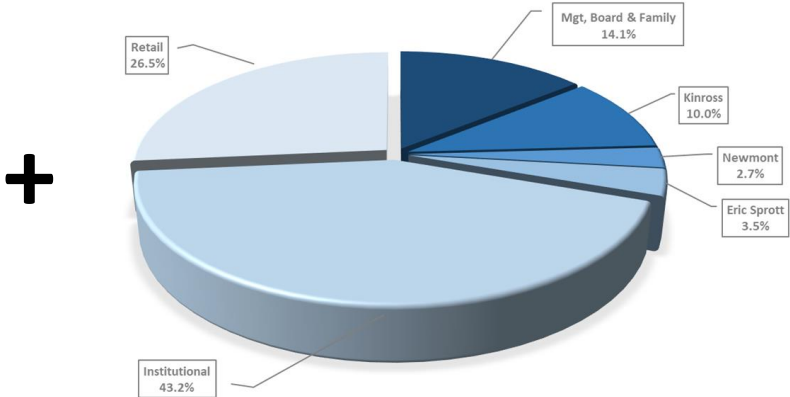
District Scale



Near-Surface High-Grade Gold



Aligned Management



=

Market Capitalization (C\$M)





Appendices



Creating Value Through M&A



- A significant amount of value has been created for shareholders of drill bit stories
 - The return on invested capital (exploration dollars spent) to shareholders has been about 10x in advanced exploration companies

Pre-Resource Precedent Acquisitions

| Announce Date | Target Name | Acquiror Name | Project Country | Value (US\$MM) | Deal Premium (Last Day) | Deal Premium (20 Day VWAP) | Gold Price (US\$/oz) | Exploration Spend (US\$M) | Number of Holes Drilled | Number of Metres Drilled (m) |
|---------------|----------------------|------------------------|-----------------|----------------|-------------------------|----------------------------|----------------------|---------------------------|-------------------------|------------------------------|
| 08-Dec-21 | Great Bear Resources | Kinross Gold | Canada | \$1,430 | 26% | 48% | \$1,780 | \$60 | 500 | 350,000 |
| 12-Apr-17 | Battle Mountain Gold | Gold Standard Ventures | USA | \$26 | 40% | 103% | \$1,274 | \$3 | 12 | 5,000 |
| 08-Sep-14 | Cayden Resources | Agnico Eagle Mines | Mexico | \$146 | 43% | 33% | \$1,266 | \$14 | 231 | 46,864 |
| 31-Jul-08 | Gold Eagle Mines | Goldcorp | Canada | \$1,360 | 19% | 36% | \$917 | \$28 | 125 | 97,000 |
| 05-Dec-05 | Virginia Gold | Goldcorp | Canada | \$414 | 29% | 43% | \$593 | \$12 | 212 | n/a |
| Average | | | | \$675 | 31% | 53% | \$1,166 | \$23 | 216 | 124,716 |
| Median | | | | \$414 | 29% | 43% | \$1,266 | \$14 | 212 | 71,932 |

Source: S&P Capital IQ, Company documents

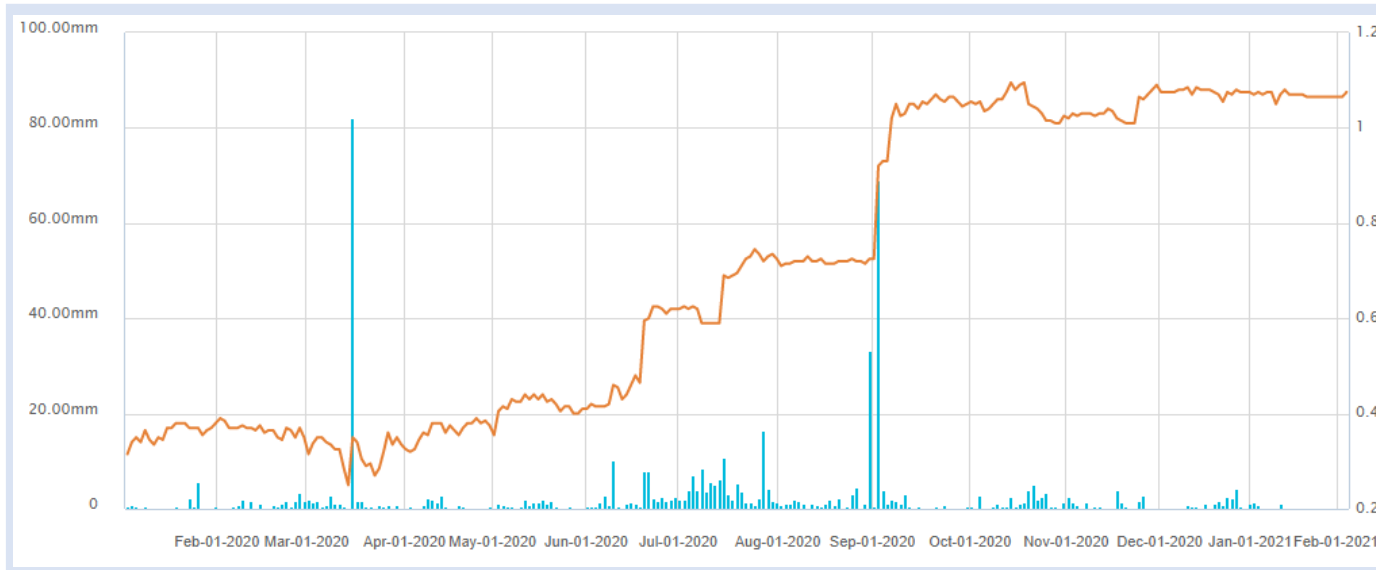
Creating Value Through M&A

- A significant amount of value has been created for shareholders of drill bit stories
 - The return on invested capital (exploration dollars spent) to shareholders has been about 10x in advanced exploration companies

| Precedent Transactions | | | | | | | | |
|------------------------|----------------------|--------------------|-----------------|----------------|-------------------------|----------------------------|----------------------|---------------------------|
| Announce Date | Target Name | Acquiror Name | Project Country | Value (US\$MM) | Deal Premium (Last Day) | Deal Premium (20 Day VWAP) | Gold Price (US\$/oz) | Exploration Spend (US\$M) |
| 08-Dec-21 | Great Bear Resources | Kinross Gold | Canada | \$1,430 | 26% | 48% | \$1,780 | \$60 |
| 10-Mar-21 | GT Gold | Newmont Mining | Canada | \$365 | 62% | 38% | \$1,715 | \$28 |
| 02-Nov-20 | Monarch Gold | Yamana Gold | Canada | \$114 | 41% | 43% | \$1,888 | \$13 |
| 30-Jul-20 | Eastmain Resources | Auryn Resources | Canada | \$88 | 137% | 123% | \$1,957 | \$51 |
| 02-Mar-20 | Balmoral Resources | Wallbridge Mining | Canada | \$83 | 46% | 46% | \$1,645 | \$52 |
| 12-May-16 | Kaminak Gold | Goldcorp | Canada | \$358 | 33% | 40% | \$1,276 | \$100 |
| 19-Jan-15 | Probe Mines | Goldcorp | Canada | \$393 | 49% | 30% | \$1,277 | \$49 |
| 12-Nov-12 | Queenston Mining | Osisko Mining | Canada | \$436 | 20% | 37% | \$1,731 | \$61 |
| 15-Oct-12 | Prodigy Gold | Argonaut Gold | Canada | \$285 | 58% | 54% | \$1,760 | \$33 |
| 27-Apr-12 | Trelawney Resources | IAMGOLD | Canada | \$514 | 42% | 37% | \$1,661 | \$61 |
| 01-Apr-12 | Comaplex Minerals | Agnico Eagle Mines | Canada | \$695 | 27% | 33% | \$1,115 | n/a |
| 22-Mar-10 | Brett Resources | Osisko Mining | Canada | \$304 | 56% | 52% | \$1,108 | \$27 |
| 14-Feb-07 | Cumberland Gold | Agnico Eagle Mines | Canada | \$574 | 29% | 24% | \$748 | \$58 |
| Average | | | | \$351 | 50% | 46% | \$1,490 | \$48 |
| Median | | | | \$361 | 44% | 39% | \$1,653 | \$51 |

Source: S&P Capital IQ, Company documents

Multiple Bidders – Shareholders Win



Shandong Acquisition of Cardinal Resources

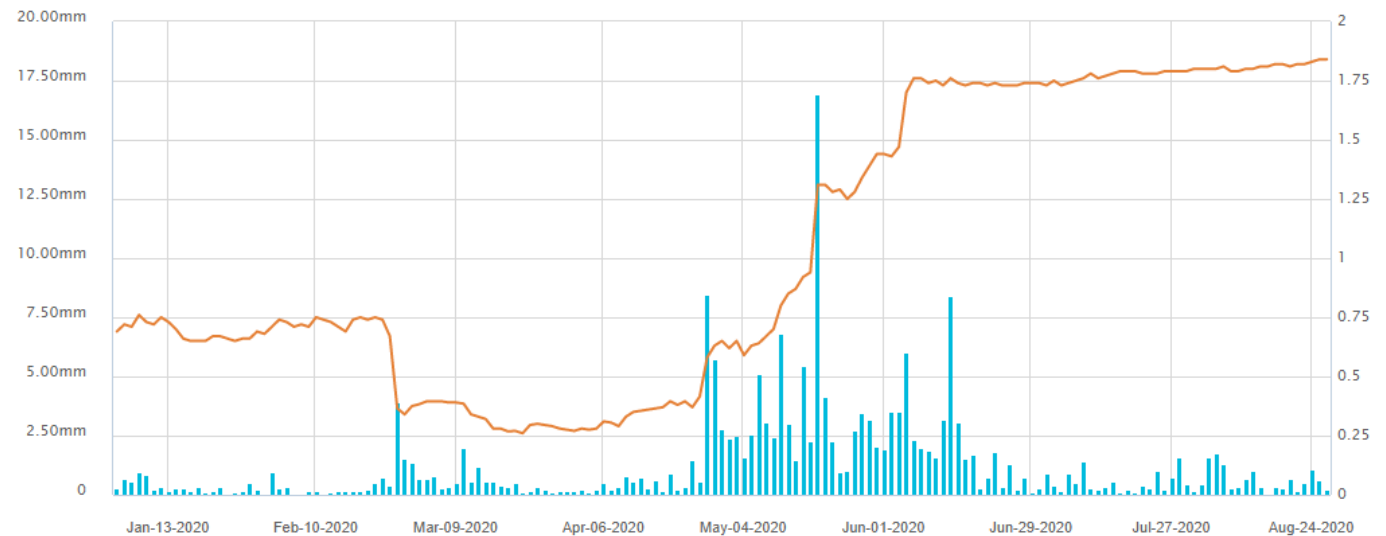
- Mar 16, 2020: Receives non-binding bid for A\$0.45775 per share from Nord Gold
- Jun 18, 2020: Receives All-Cash offer by Shandong for A\$0.60 per share
- Jan 13, 2021: Shandong acquires Cardinal for A\$1.075 per share

Total return to shareholders from the Mar 13, 2020 closing price was ~440%

Zijin Acquisition of Guyana Goldfields

- Apr 27, 2020: Silvercorp bids C\$0.60 per share to acquire Guyana Goldfields
- May 11, 2020: Receives Unsolicited Proposal from Gran Colombia for C\$0.76 per share
- Jun 12, 2020: Zijin Mining makes \$1.85 per share all-cash bid for Guyana Goldfields

Total return to shareholders from the Apr 24, 2020 closing price was ~350%



Aurion-B2Gold JV – Helmi Discovery



Qtz-Mt-Py vein (left) in chlorite-sericite altered ultramafic tuff (16.2m).



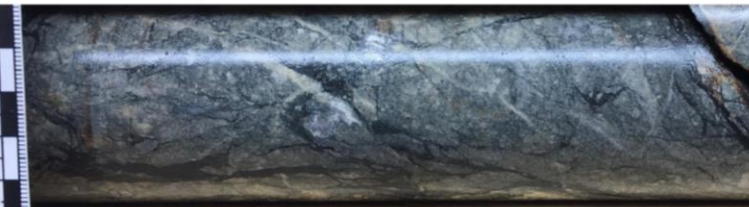
Discordant Qtz-Mt vein in ultramafic tuff (27.5m).



1.3 g/t Au



2.5 g/t Au

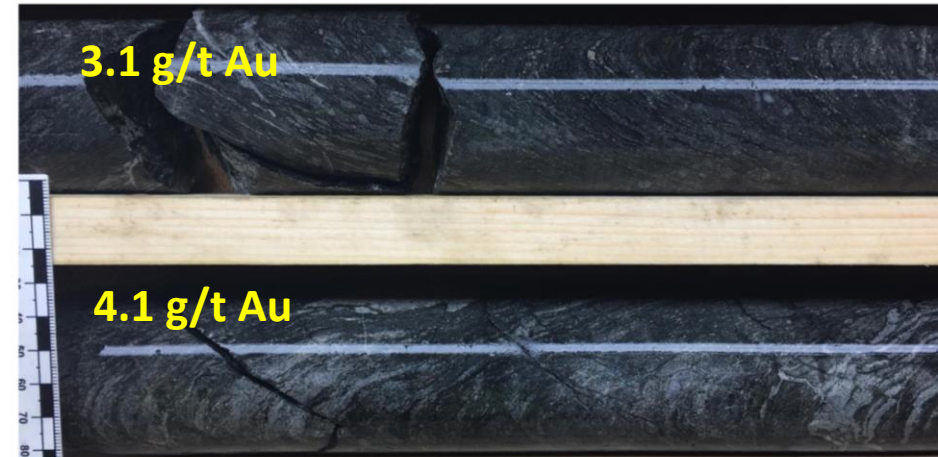


FeDol-Mt-Chl-altered mafic tuff, 1% disseminated Py (53.8m).



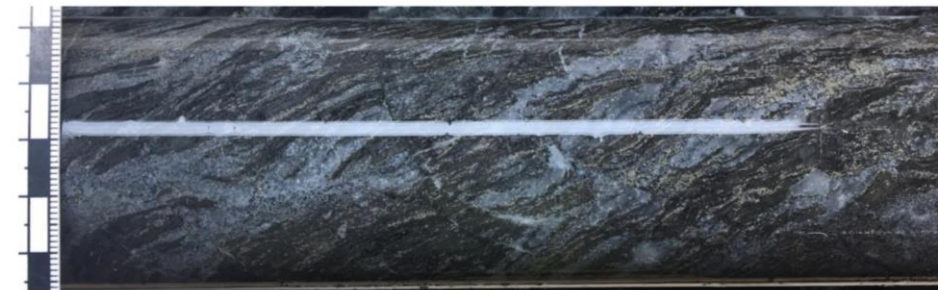
2.1 g/t Au

Mt-Bt (minor Chl) and folded Qtz-Mt-Py veins mafic tuff (MT) ~122.5m



3.1 g/t Au

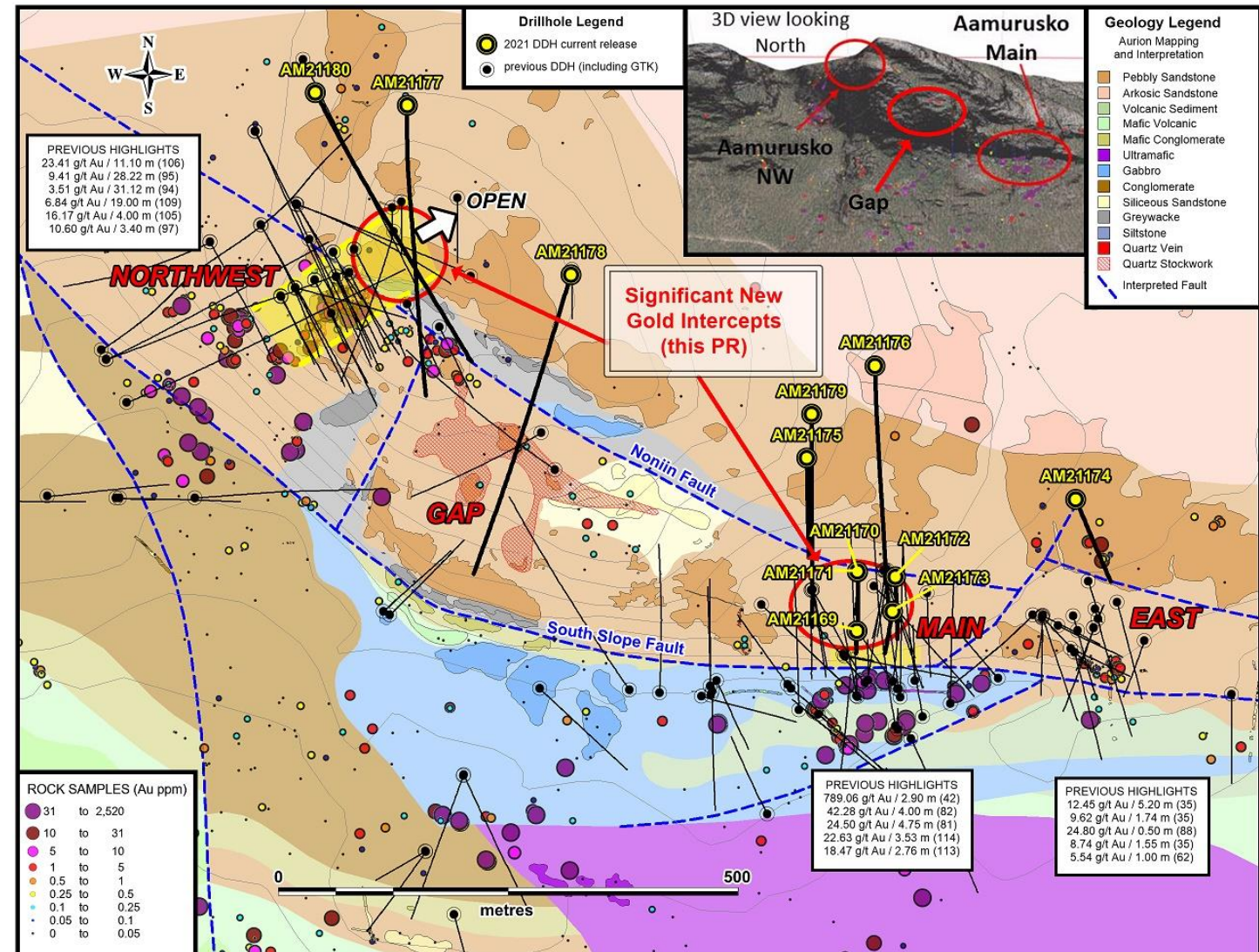
4.1 g/t Au



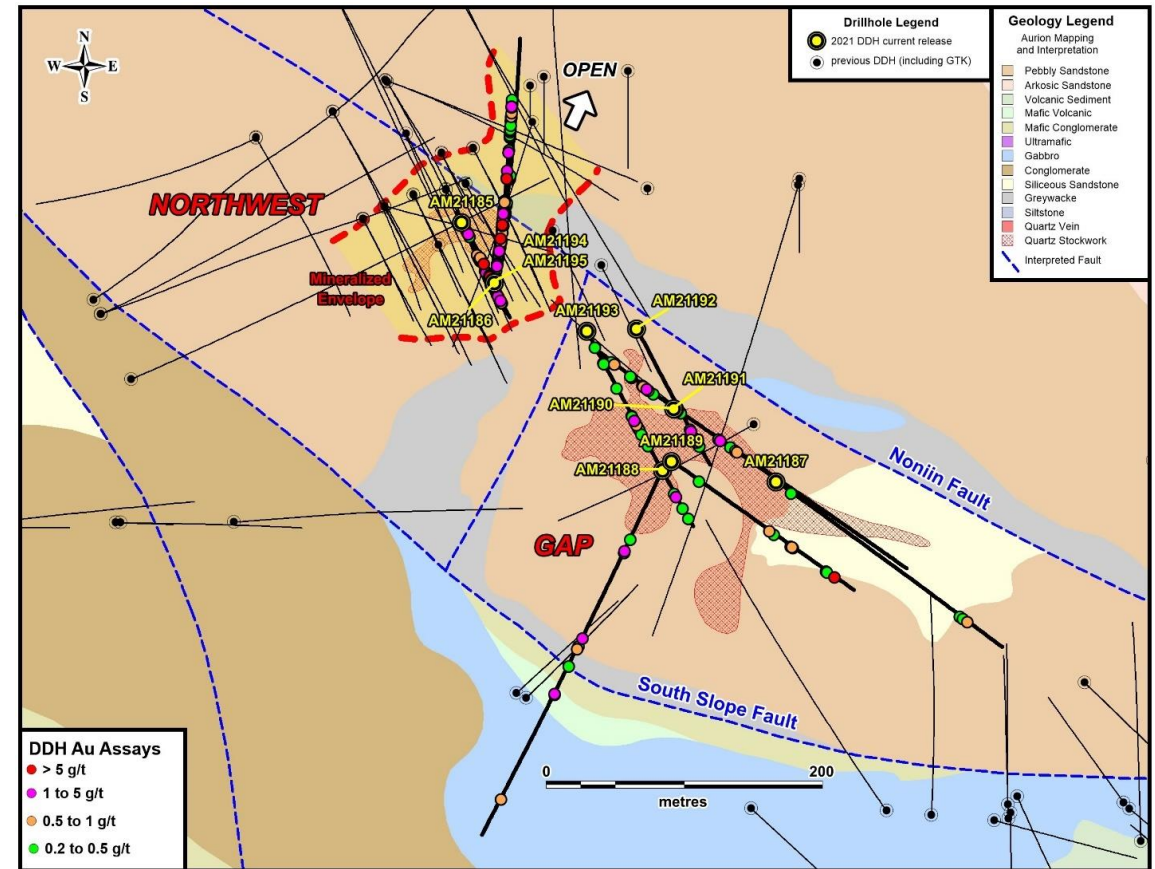
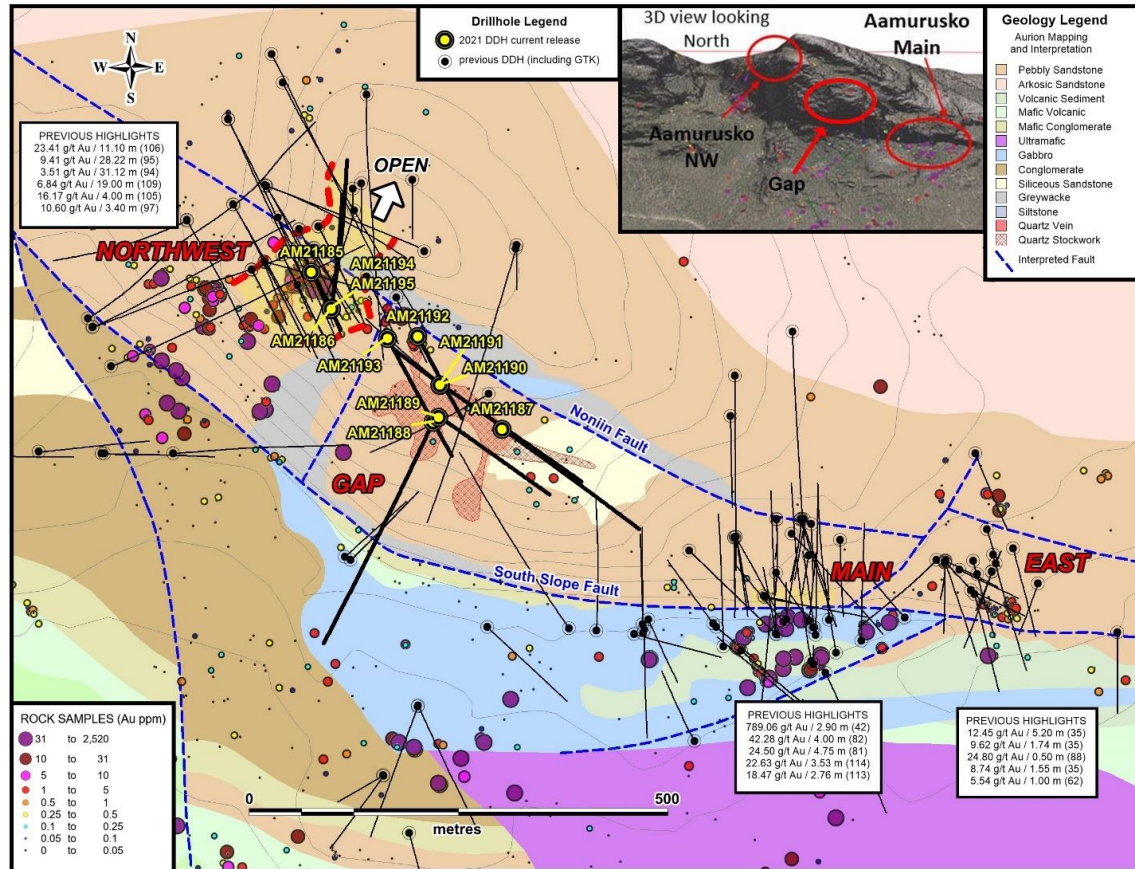
Chl-Bt-Mt-altered tuffite (TFT) hosting 7-15% of fine-grained PY (132-133m and 134m).

Risti – Aamursko Drilling 2021 – Main and North

- Gold mineralization extended to the northeast at Aamursko NW
- Broad zone of gold mineralization intersected in gabbro
- New Gold Setting – Conglomerate hosted gold mineralization intersected in previously untested area
- Confirmation and extension of gold mineralized structures at Aamursko Main with intervals up to 88.90 g/t Au over 0.40 m
- Parallel structures with gold potential identified

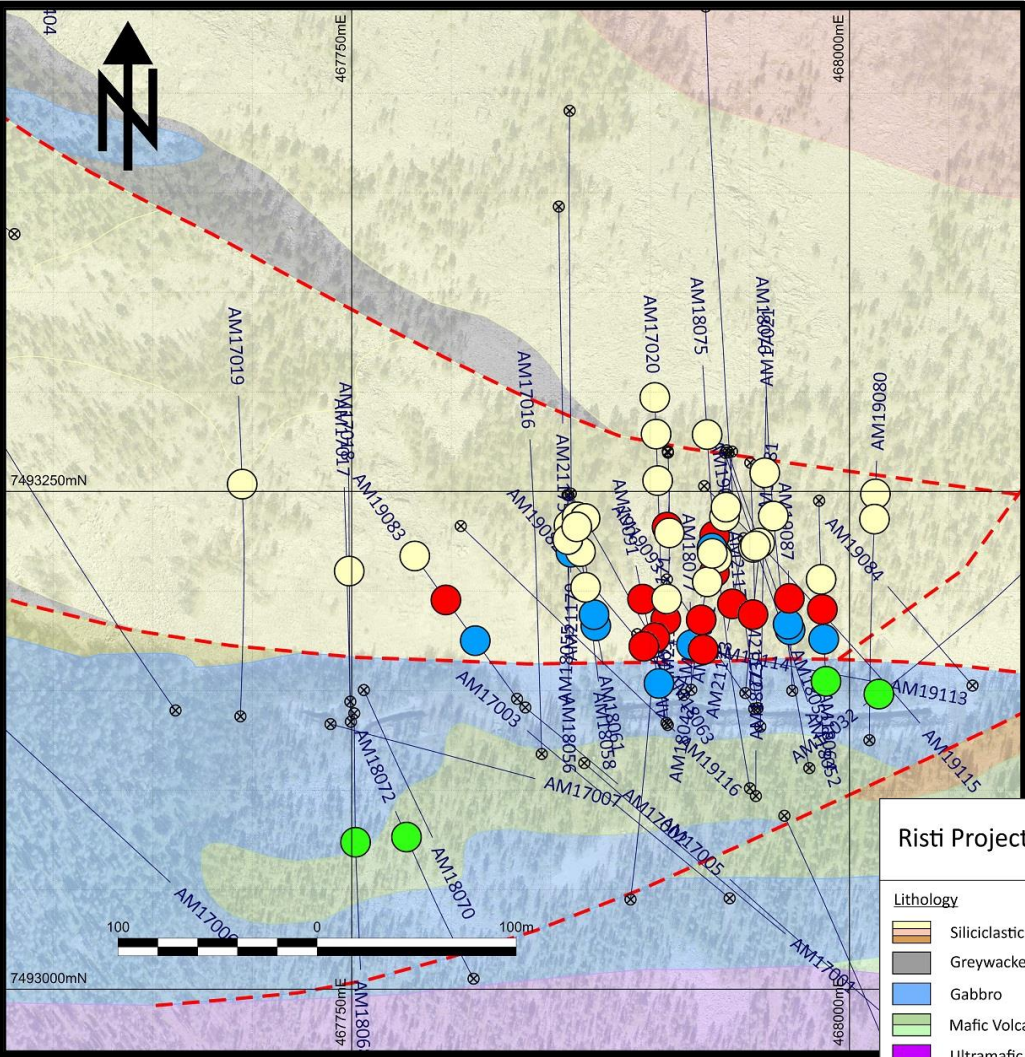


Risti – Aamurusko Drilling 2021 – NW and Gap Zone

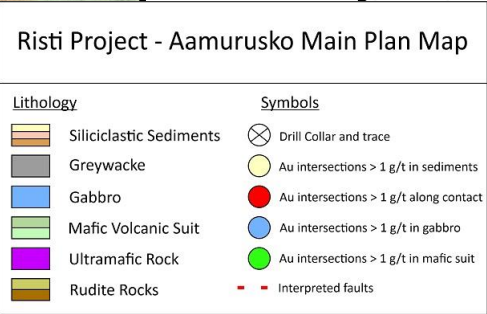
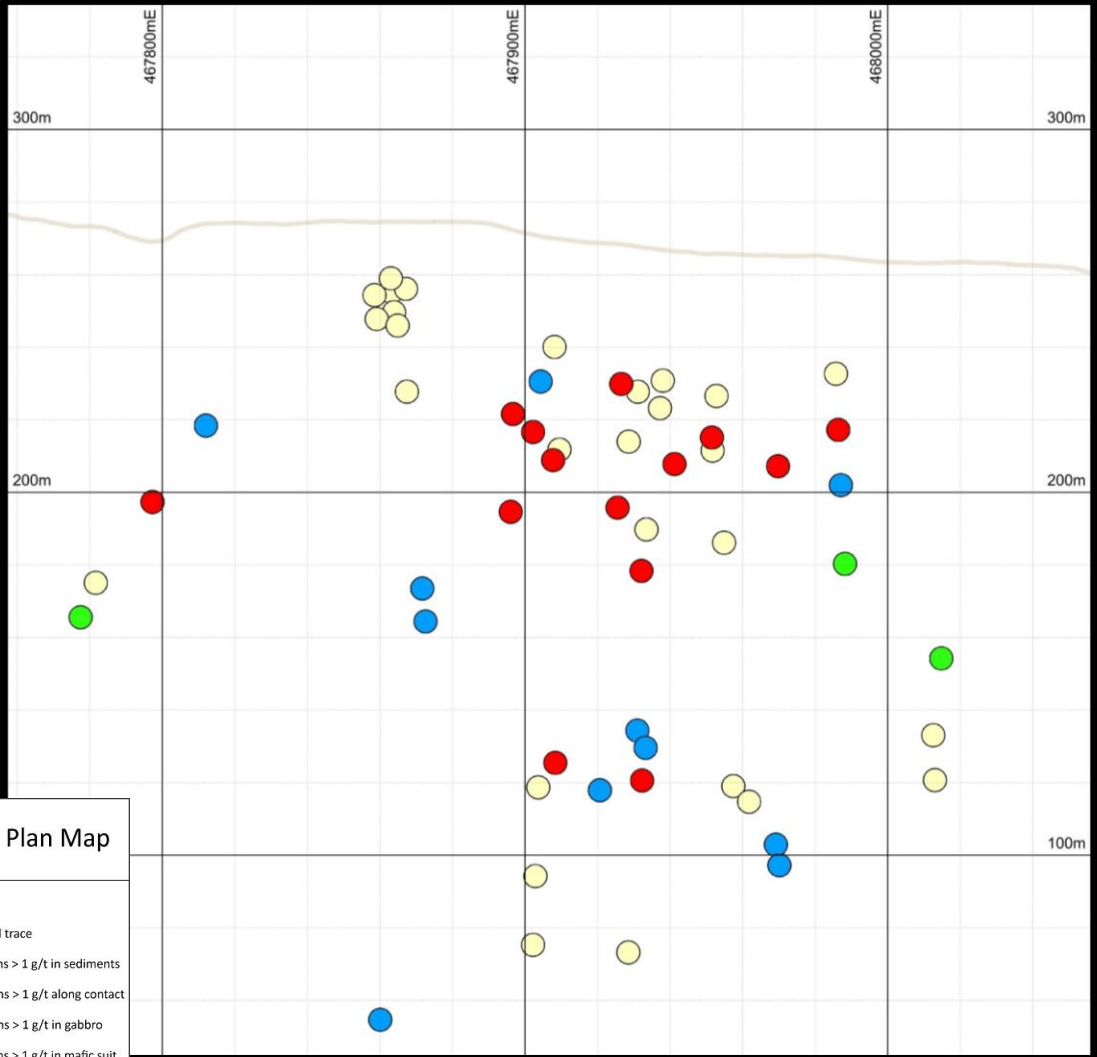


Risti – Aamurusko Main – Gold in Multiple Host Rocks

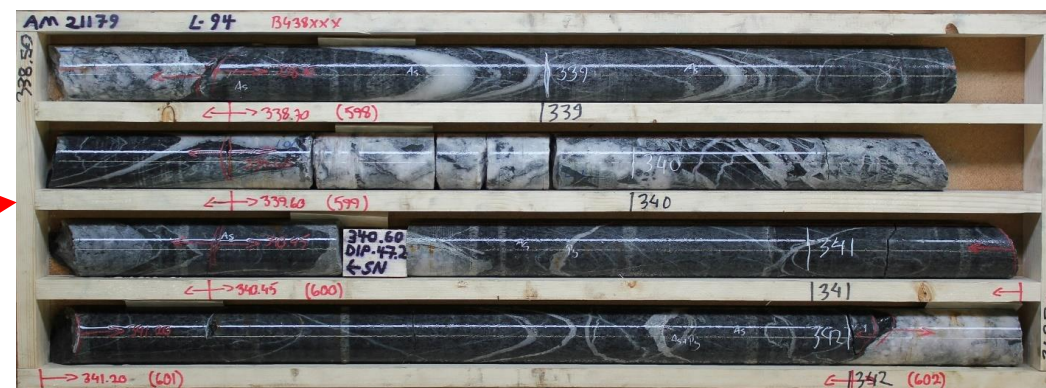
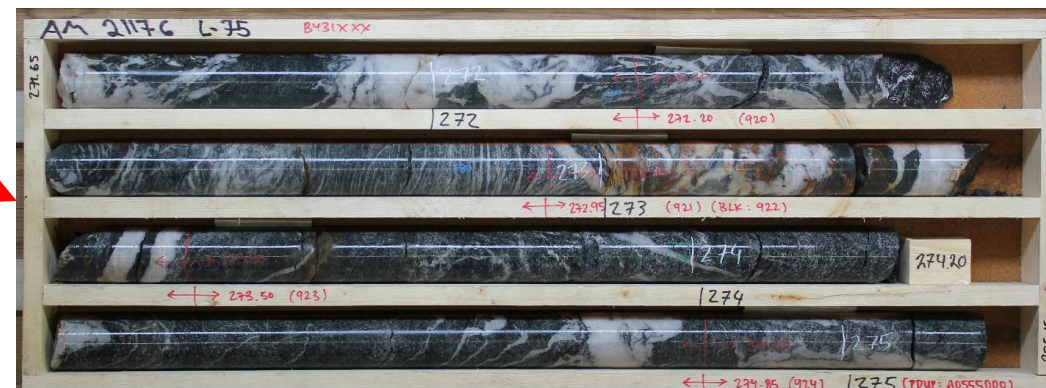
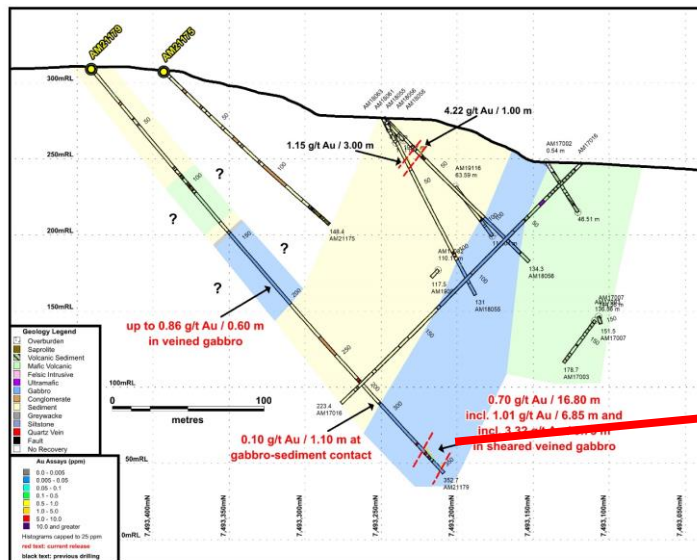
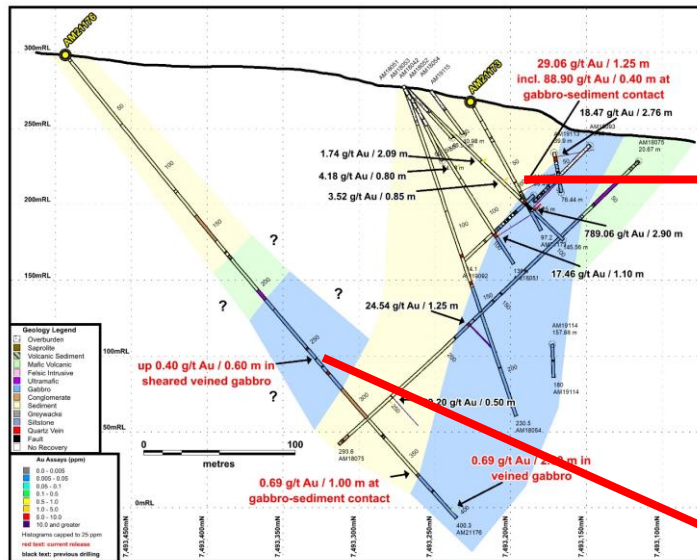
Plan view



Long section



Risti – Aamurusko – Parallel Gold Bearing Structures

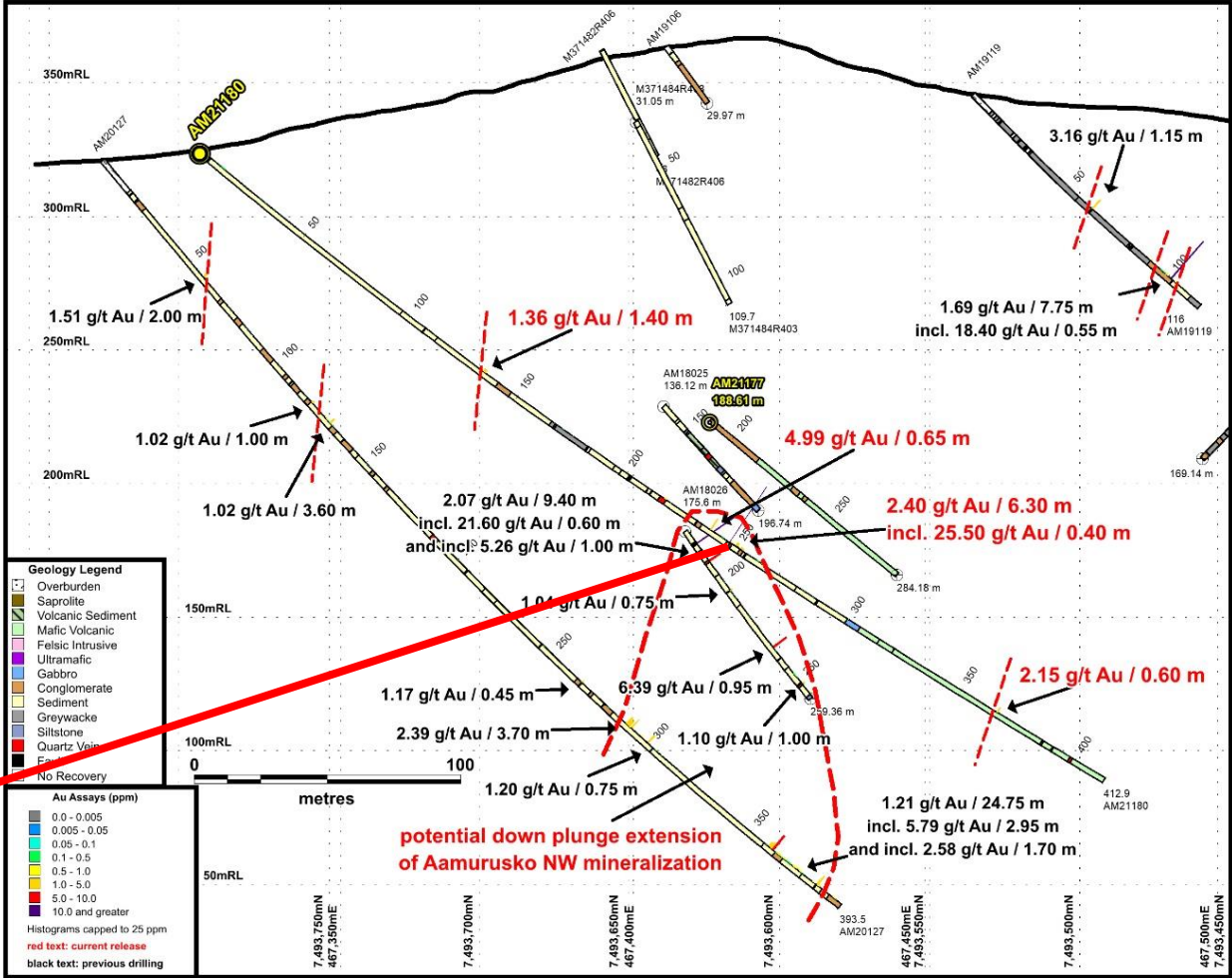
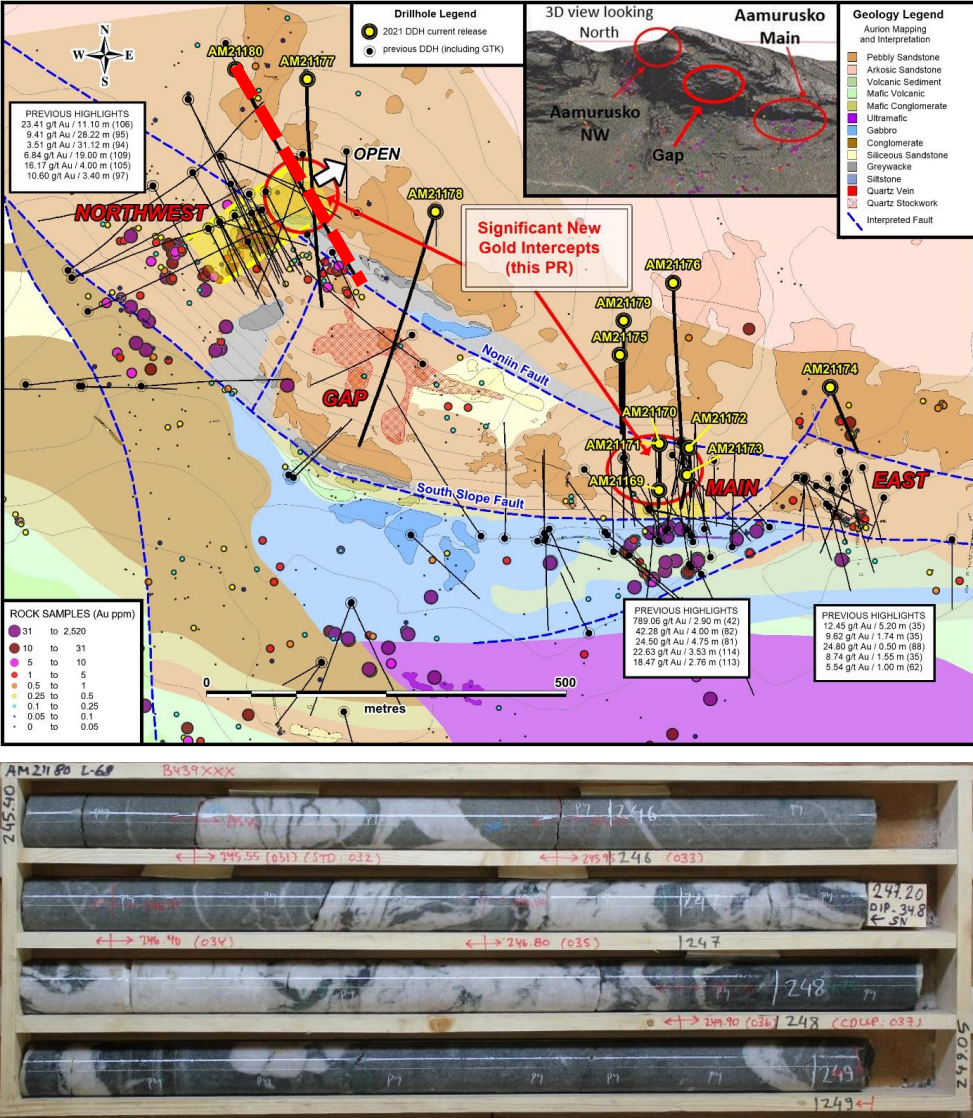


Gold in quartz veins
clastic sediments and
along sheared
contact between
sediment and gabbro

Gold in altered,
veined and sulphide
disseminated gabbro

Gold in altered,
veined and sulphide
disseminated gabbro

Risti – Aamurusko Drilling 2021 – NW Extensions





TSXV: AU; OTCQX: AIRRF

For Further Information Visit:

www.aurionresources.com

Or Contact:

msantarossa@aurionresources.ca